



## INTRODUCTION

In the CPLHS Archives, there are transcriptions of two surveys made shortly after the passing of the Cartmel Enclosure Act of 1796. Those surveys, by Johnson in 1799 and Buttle in 1812, give details of the owners, occupiers and various other details of numbered fields and properties in the areas which they cover, but they do not mention the location of any of the properties.

The main purpose of this document is to provide schedules of the approximate locations of the fields and properties listed in those transcribed surveys, without to need to reproduce the whole of those lengthy transcripts.

Also included are some notes on how the fields and properties were numbered, and why some numbers are duplicated in some townships in Buttle's survey.

## BACKGROUND to the FIELD NUMBERING

Stockdale's Annals of Cartmel, pages 330 & 331, gives the following account of the appointment of surveyors by the Commissioners appointed by the Enclosure Act.

"On the same day [31<sup>st</sup> July 1796] the Commissioners appointed **Jno. Gibson** to survey and measure all that part of the parish which lies on the **South and South-east** side of the highway leading from Carke to Cartmel Church Town, and from thence by Fell Gate down Cart Lane to Kent or Lancaster Sands. [herein after referred to as **Area 1**]

"**Joseph Young** was appointed by them to survey and measure all that part of the pariah which lies on the **West** side of the highway leading from Carke, by Cartmel Church Town, Broughton Chapel, and Fiddler Hall, to Newby Bridge. [herein after referred to as **Area 2**]

"**Wm. Johnson** was appointed to survey and measure all that part of the said pariah which lies on the **North and East** side of the highway leading from Kent or Lancaster Sands, through Cart Lane, by Fell Gate, Cartmel Church Town, Broughton Chapel, Fiddler Hall, Ayside and Newton, down Tautup to Witherslack. [herein after referred to as **Area 3**].

"And they appointed **Thos. Ingilby** to survey and measure all that part of the said parish which lies on the **North** side of the highway leading from Witherslack up Tautup, by Newton, Ayside, and Fiddler Hall, to Newby Bridge. [herein after referred to as **Area 4**]"

The most significant feature of this division of the parish is that it completely ignores township boundaries. The difference between the survey area boundaries and the township boundaries is illustrated on the map between these notes and the schedules. The list below summarises each area by township.

- Area 1 Principally most of Lower Allithwaite & Lower Holker
- Area 2 Principally Upper Holker, + parts of Lower Holker, Lower Allithwaite, Broughton East and Staveley
- Area 3 Principally most of Broughton East, + parts of Lower Allithwaite, Upper Allithwaite and Staveley
- Area 4 Principally Cartmel Fell, + parts of Upper Allithwaite & Staveley

When the townships are summarised by area as below, it is clear that most townships will have fields numbered by more than one surveyor, and hence the duplicate numbers in townships noted in Buttle's survey.

<b>Townships</b>	<b>Survey Areas</b>			
Lower Holker	<b>1</b>	<b>2</b>		
Upper Holker		<b>2</b>		
Lower Allithwaite	<b>1</b>	<b>2</b>	<b>3</b>	
Upper Allithwaite			<b>3</b>	<b>4</b>
Broughton East	<b>2</b>	<b>3</b>		
Staveley	<b>2</b>	<b>3</b>	<b>4</b>	
Cartmel Fell				<b>4</b>

## **SURVEYS and MAPS**

There is no doubt that as a result of the surveys commissioned by the Enclosure Commissioners, each of the four surveyors would have produced a map and an accompanying schedule. At present, none of those original four maps has been found in any archives, and only Johnson's schedule for area 3 has been found and transcribed.

However, soon after the four original maps were produced, they seem to have been consolidated into a single map of the whole parish, which is now in Cumbria Archives (Kendal) with the reference WPR 89/3/2/23. This map measures about 51" x32", and a digital copy of it has been donated to the CPLHS Archives. It is from that map that the attached schedules of approximate locations has been obtained.

## **NOTES ON THE ATTACHED SCHEDULES**

In the attached schedules, the location notes have only been included if they have actually been seen on the map. There are two main reasons for the omissions, namely, some numbers in the map are either out of focus or otherwise illegible, and some numbers are not present on the map due to very small plots in built up areas. However, as may be noticed from the methodology used by the surveyors for numbering fields and properties in their areas, when no location for a particular number is shown in the schedules, it is likely to be in a similar district to adjacent numbers in that survey area.

The table above shows the potential for townships to have field and property numbers in more than one survey area. A study of the attached schedules shows that duplication of field and property numbers in a township actually occurs as follow.

Lower Allithwaite has duplication of numbers in areas 1 and 2 in the following ranges of numbers : 235 to 242, 261 to 312, 329 to 331, 350 & 351, and 505 to 508.

Lower Holker has duplication of numbers in areas 1 and 2 in the range of numbers from 105 to 190.

Broughton East has duplication of numbers in areas 2 and 3 in the range of numbers from 810 to 877, and 904 to 933.

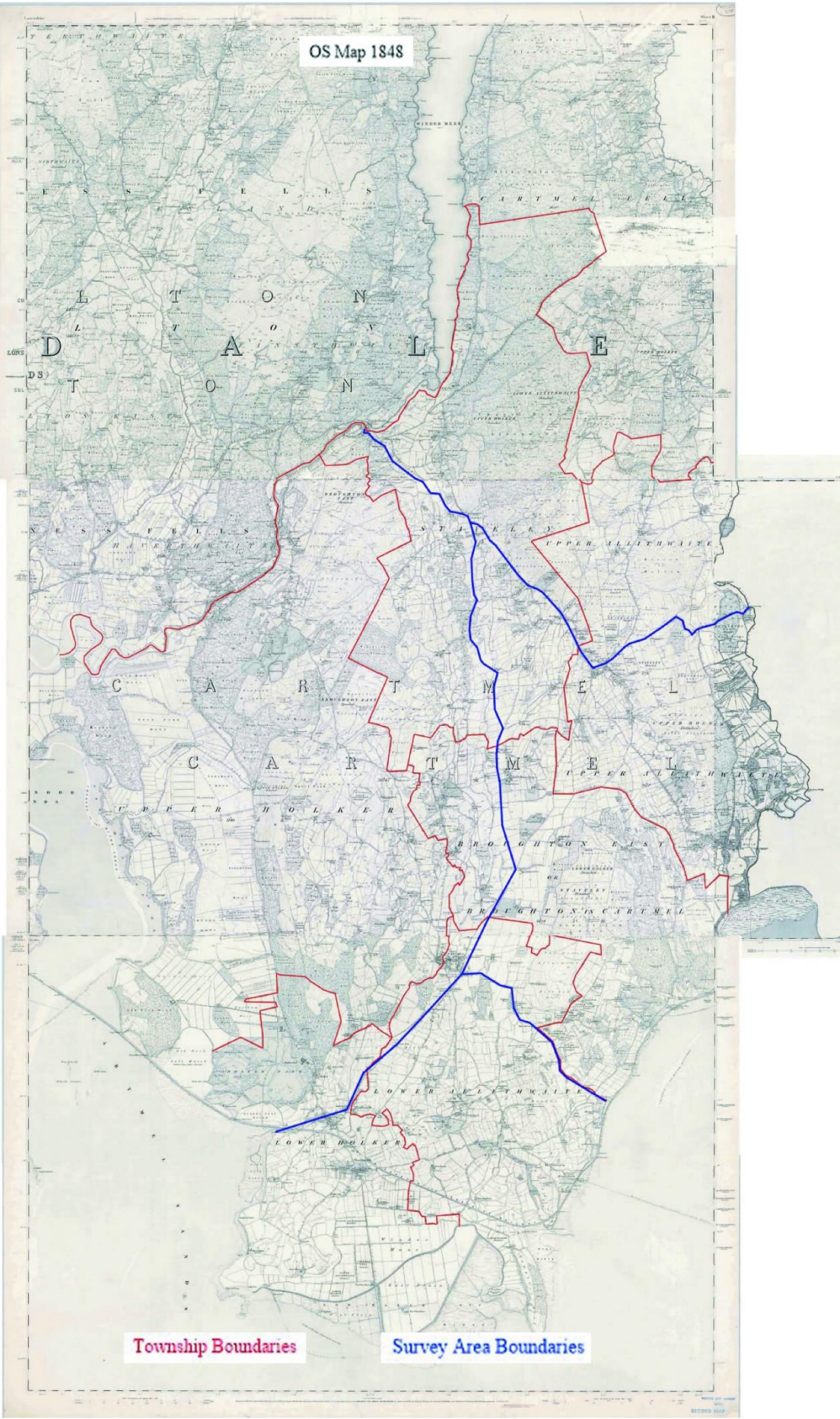
Staveley has duplication of numbers in areas 2 and 4 in the range of numbers from 882 to 1017, and 1123 to 1129.

In all these cases, it is not possible to determine the location of a field or property in Buttle's survey without additional information.

Note also that the significant number of blanks in area 4 will be for Cartmel Fell, which being out of the CPLHS area of interest, is omitted from both the transcript of Buttle's survey and from this analysis of locations.

Peter Roden  
8 May 2021

OS Map 1848



Township Boundaries

Survey Area Boundaries

Approximate Property Locations on Enclosure Survey Map Ref WPR 89/3/2/23

Area 1			
Field #	Area	Township	Approximate location
1	1	HL	South of Cannon Winder
2	1	HL	South of Cannon Winder
3	1	HL	South of Cannon Winder
4	1	HL	South of Cannon Winder
5	1	HL	Cannon Winder
6	1	HL	North of Cannon Winder
7	1	HL	North of Cannon Winder
8	1	HL	North of Cannon Winder
9	1	HL	North of Cannon Winder
10	1	HL	North of Cannon Winder
11	1	HL	East of Cannon Winder
12	1	HL	East of Cannon Winder
13	1	HL	East of Cannon Winder
14	1	HL	East of Cannon Winder
15	1	HL	East of Cannon Winder
16	1	HL	East of Cannon Winder
17	1	HL	Between Cannon Winder & Raven Winder
18	1	HL	Between Cannon Winder & Raven Winder
19	1	HL	North West of Raven Winder
20	1	HL	North West of Raven Winder
21	1	HL	North West of Raven Winder
22	1	HL	North West of Raven Winder
23	1	HL	North West of Raven Winder
24	1	HL	North West of Raven Winder
25	1	HL	North West of Raven Winder
26	1	HL	South of Raven Winder
27	1	HL	Probably at or near Raven Winder
28	1	HL	At or near Raven Winder
29	1	HL	At or near Raven Winder
30	1	HL	Probably at or near Raven Winder
31	1	HL	Bewteen Mireside and Winders
32	1	HL	Bewteen Mireside and Winders
33	1	HL	Bewteen Mireside and Winders
34	1	HL	Bewteen Mireside and Winders
35	1	HL	Bewteen Mireside and Winders
36	1	HL	Bewteen Mireside and Winders
37	1	HL	Bewteen Mireside and Winders
38	1	HL	Bewteen Mireside and Winders
39	1	HL	Bewteen Mireside and Winders
40	1	HL	Bewteen Mireside and Winders
41	1	HL	Bewteen Mireside and Winders
42	1	HL	Bewteen Mireside and Winders
43	1	HL	Bewteen Mireside and Winders
44	1	HL	Bewteen Mireside and Winders
45	1	HL	Bewteen Mireside and Winders
46	1	HL	Bewteen Mireside and Winders
47	1	HL	Bewteen Mireside and Winders
48	1	HL	Bewteen Mireside and Winders
49	1	HL	Bewteen Mireside and Winders
50	1	HL	Bewteen Mireside and Winders

Area 2			
Field #	Area	Township	Approximate location
1	2	HU	North or NW of Lady Syke
2	2	HU	North or NW of Lady Syke
3	2	HU	North or NW of Lady Syke
4	2	HU	North or NW of Lady Syke
5	2	HU	North or NW of Lady Syke
6	2	HU	North or NW of Lady Syke
7	2	HU	North or NW of Lady Syke
8	2	HU	North or NW of Lady Syke
9	2	HU	North or NW of Lady Syke
10	2	HU	Next to Lady Syke
11	2	HU	Lady Syke
12	2	HU	Between Lady Syke and Mearne
13	2	HU	Between Lady Syke and Mearne
14	2	HU	Between Lady Syke and Mearne
15	2	HU	Between Lady Syke and Mearne
16	2	HU	Between Lady Syke and Mearne
17	2	HU	Between Lady Syke and Mearne
18	2	HU	Between Lady Syke and Mearne
19	2	HU	Between Lady Syke and Mearne
20	2	HU	Between Lady Syke and Mearne
21	2	HU	Between Lady Syke and Mearne
22	2	HU	Between Lady Syke and Mearne
23	2	HU	Between Lady Syke and Mearne
24	2	HU	Between Lady Syke and Mearne
25	2	HU	Between Lady Syke and Mearne
26	2	HU	Between Lady Syke and Mearne
27	2	HU	Between Lady Syke and Mearne
28	2	HU	Between Lady Syke and Mearne
29	2	HU	Between Lady Syke and Mearne
30	2	HU	Between Lady Syke and Mearne
31	2	HU	Between Lady Syke and Mearne
32	2	HU	Between Lady Syke and Mearne
33	2	HU	Between Lady Syke and Mearne
34	2	HU	Rounsea
35	2	HU	Between Rounsea & Frith
36	2	HU	Between Rounsea & Frith
37	2	HU	Between Rounsea & Frith
38	2	HU	Between Rounsea & Frith
39	2	HU	Between Rounsea & Frith
40	2	HU	Between Rounsea & Frith
41	2	HU	Between Rounsea & Frith
42	2	HU	Between Rounsea & Frith
43	2	HU	Between Rounsea & Frith
44	2	HU	Between Rounsea & Frith
45	2	HU	Between Rounsea & Frith
46	2	HU	Between Rounsea & Frith
47	2	HU	Between Rounsea & Frith
48	2	HU	Between Rounsea & Frith
49	2	HU	Between Rounsea & Frith
50	2	HU	Between Rounsea & Frith

Area 3			
Field #	Area	Township	Approximate location
1	3	S	Close to Fidler Hall
2	3	S	Close to Fidler Hall
3	3	S	Close to Fidler Hall
4	3	S	Close to Fidler Hall
5	3	S	Close to Fidler Hall
6	3	S	Fidler Hall
7	3	S	Close to Fidler Hall
8	3	S	Close to Fidler Hall
9	3	S	Close to Fidler Hall
10	3	S	Close to Fidler Hall
11	3	S	Close to Fidler Hall
12	3	S	Close to Fidler Hall
13	3	S	Between Fidler Hall & Ayside
14	3	S	Between Fidler Hall & Ayside
15	3	S	Between Fidler Hall & Ayside
16	3	S	Between Fidler Hall & Ayside
17	3	S	Between Fidler Hall & Ayside
18	3	S	Between Fidler Hall & Ayside
19	3	S	Between Fidler Hall & Ayside
20	3	S	Between Fidler Hall & Ayside
21	3	S	Between Fidler Hall & Ayside
22	3	S	Between Fidler Hall & Ayside
23	3	S	Between Fidler Hall & Ayside
24	3	S	Between Fidler Hall & Ayside
25	3	S	Between Fidler Hall & Ayside
26	3	S	Between Fidler Hall & Ayside
27	3	S	Between Fidler Hall & Ayside
28	3	S	Between Fidler Hall & Ayside
29	3	S	Between Fidler Hall & Ayside
30	3	S	Between Fidler Hall & Ayside
31	3	S	Between Fidler Hall & Ayside
32	3	S	Between Fidler Hall & Ayside
33	3	S	Between Fidler Hall & Ayside
34	3	S	Between Fidler Hall & Ayside
35	3	S	Between Fidler Hall & Ayside
36	3	S	Between Fidler Hall & Ayside
37	3	S	Between Fidler Hall & Ayside
38	3	S	Between Fidler Hall & Ayside
39	3	S	Between Fidler Hall & Ayside
40	3	S	Between Fidler Hall & Ayside
41	3	S	Between Fidler Hall & Ayside
42	3	S	Between Fidler Hall & Ayside
43	3	S	Between Fidler Hall & Ayside
44	3	S	Between Fidler Hall & Ayside
45	3	S	Between Fidler Hall & Ayside
46	3	S	Between Fidler Hall & Ayside
47	3	S	Between Seatle & Ayside
48	3	S	Between Seatle & Ayside
49	3	S	Between Seatle & Ayside
50	3	S	Between Seatle & Ayside

Area 4			
Field #	Area	Township	Approximate location

Approximate Property Locations on Enclosure Survey Map Ref WPR 89/3/2/23

Area 1				Area 2				Area 3				Area 4			
Field #	Area	Township	Approximate location	Field #	Area	Township	Approximate location	Field #	Area	Township	Approximate location	Field #	Area	Township	Approximate location
51	1	HL	South of Mireside	51	2	HU	Between Rounsea & Frith	51	3	S	Between Seatle & Ayside				
52	1	HL	South of Mireside	52	2	HU	Between Rounsea & Frith	52	3	S	Between Seatle & Ayside				
53	1	HL	South of Mireside	53	2	HU	Between Rounsea & Frith	53	3	S	Between Seatle & Ayside				
54	1	HL	South of Mireside	54	2	HU	Between Rounsea & Frith	54	3	S	Between Seatle & Ayside				
55	1	HL	South of Mireside	55	2	HU	Between Rounsea & Frith	55	3	S	Between Seatle & Ayside				
56	1	HL	South of Mireside	56	2	HU	Between Rounsea & Frith	56	3	S	Between Seatle & Ayside				
57	1	HL	South of Mireside	57	2	HU	Between Rounsea & Frith	57	3	S	Between Seatle & Ayside				
58	1	HL	South of Mireside	58	2	HU	Between Rounsea & Frith	58	3	S	Between Seatle & Ayside				
59	1	HL	South of Mireside	59	2	HU	Between Rounsea & Frith	59	3	S	Between Seatle & Ayside				
60	1	HL	South of Mireside	60	2	HU	Between Rounsea & Frith	60	3	S	Between Fidler Hall & Ayside				
61	1	HL	South West of Mireside	61	2	HU	Between Rounsea & Frith	61	3	S	Between Fidler Hall & Ayside				
62	1	HL	West of Flookburgh towards Cannon Winder	62	2	HU	Between Rounsea & Frith	62	3	S	Between Fidler Hall & Ayside (probably)				
63	1	HL	West of Flookburgh towards Cannon Winder	63	2	HU	Between Rounsea & Frith	63	3	S	Between Fidler Hall & Ayside				
64	1	HL	West of Flookburgh towards Cannon Winder	64	2	HU	Between Rounsea & Frith	64	3	S	Between Ayside & Seatle				
65	1	HL	Between Sandgate & Cannon Winder	65	2	HU	Between Rounsea & Frith	65	3	S	Between Ayside & Seatle				
66	1	HL	Between Sandgate & Cannon Winder	66	2	HU	Between Rounsea & Frith	66	3	S	Between Ayside & Seatle				
67	1	HL	West of Flookburgh towards Cannon Winder	67	2	HU	Between Rounsea & Frith	67	3	S	Between Barber Green & Seatle				
68	1	HL	West of Flookburgh towards Cannon Winder	68	2	HU	Between Rounsea & Frith	68	3	S	Between Barber Green & Seatle				
69	1	HL	West of Flookburgh towards Cannon Winder	69	2	HU	Between Rounsea & Frith	69	3	S	Between Barber Green & Seatle				
70	1	HL	West of Flookburgh towards Cannon Winder	70	2	HU	Between Rounsea & Frith	70	3	S	Between Barber Green & Seatle				
71	1	HL	West of Flookburgh towards Cannon Winder	71	2	HU	Between Rounsea & Frith	71	3	S	Between Barber Green & Seatle				
72	1	HL	West of Flookburgh towards Cannon Winder	72	2	HU	Between Rounsea & Frith	72	3	S	Between Barber Green & Seatle				
73	1	HL	West of Flookburgh towards Cannon Winder	73	2	HU	Between Rounsea & Frith	73	3	S	Between Barber Green & Seatle				
74	1	HL	West of Flookburgh towards Cannon Winder	74	2	HU	Between Rounsea & Frith	74	3	S	Between Barber Green & Seatle				
75	1	HL	West of Flookburgh towards Cannon Winder	75	2	HU	Between Rounsea & Frith	75	3	S	Between Barber Green & Seatle				
76	1	HL	West of Flookburgh towards Cannon Winder	76	2	HU	Between Rounsea & Frith	76	3	S	Between Barber Green & Seatle				
77	1	HL	Between Sandgate & Cannon Winder	77	2	HU	Between Rounsea & Frith	77	3	S	Between Barber Green & Seatle				
78				78	2	HU	Between Rounsea & Frith	78	3	S	Between Barber Green & Seatle				
79	1	HL	Between Sandgate & Cannon Winder	79	2	HU	Between Rounsea & Frith	79	3	S	Between Barber Green & Seatle				
80	1	HL	Between Sandgate & Cannon Winder	80	2	HU	Between Rounsea & Frith	80	3	S	Between Barber Green & Ayside				
81	1	HL	Between Sandgate & Cannon Winder	81	2	HU	Between Rounsea & Frith	81	3	S	Between Barber Green & Ayside				
82	1	HL	Between Sandgate & Cannon Winder	82	2	HU	Between Park Head & Park	82	3	S	Between Barber Green & Ayside				
83				83	2	HU	Between Park Head & Park	83	3	S	Between Barber Green & Ayside				
84				84	2	HU	Between Park Head & Park	84	3	S	Between Barber Green & Ayside				
85				85	2	HU	Between Park Head & Park	85	3	S	Between Barber Green & Ayside				
86				86	2	HU	Between Park Head & Park	86	3	S	Between Barber Green & Ayside				
87				87	2	HU	Between Park Head & Park	87	3	S	Between Barber Green & Ayside				
88				88	2	HU	Between Park Head & Park	88	3	S	Between Barber Green & Ayside				
89				89	2	HU	Between Park Head & Park	89	3	S	Between Barber Green & Ayside				
90				90	2	HU	Between Park Head & Park	90	3	S	At or near Ayside North West side				
91				91	2	HU	Between Park Head & Park	91	3	S	At or near Ayside North West side				
92				92	2	HU	Between Park Head & Park	92	3	S	At or near Ayside North West side				
93				93	2	HU	Between Park Head & Park	93	3	S	At or near Ayside North West side				
94				94	2	HU	Between Park Head & Park	94	3	S	At or near Ayside North West side				
95				95	2	HU	Between Park Head & Park	95	3	S	At or near Ayside North West side				
96	1	HL	Between Sandgate & Cannon Winder	96	2	HU	Between Park Head & Park	96	3	S	At or near Ayside North West side				
97	1	HL	Between Sandgate & Cannon Winder	97	2	HU	Between Park Head & Park	97	3	S	Between Fidler Hall & Ayside				
98	1	HL	Between Sandgate & Cannon Winder	98	2	HU	Between Park Head & Park	98	3	S	Ayside or near				
99	1	HL	Between Sandgate & Cannon Winder	99	2	HU	Between Park Head & Park	99	3	S	At or near Ayside North West side				
100				100	2	HU	Between Park Head & Park	100	3	S	At or near Ayside North West side				

Approximate Property Locations on Enclosure Survey Map Ref WPR 89/3/2/23

Area 1				Area 2				Area 3				Area 4			
Field #	Area	Township	Approximate location	Field #	Area	Township	Approximate location	Field #	Area	Township	Approximate location	Field #	Area	Township	Approximate location
101	1	HL	Between Sandgate & Cannon Winder	101	2	HU	Between Park Head & Park	101	3	S	At or near Ayside North West side				
102				102	2	HU	Between Park Head & Park	102	3	S	Ayside or near				
103				103	2	HU	Between Park Head & Park	103	3	S	Ayside or near				
104	1	HL	Between Sandgate & Cannon Winder	104	2	HU	North end of Holker Park	104	3	S	Ayside or near				
105	1	HL	Between Sandgate & Cannon Winder	105	2	HL	North end of Holker Park	105	3	S	Ayside (probably)				
106	1	HL	At or near Sandgate	106	2	HL	North end of Holker Park	106	3	S	Ayside (probably)				
107	1	HL	At or near Sandgate	107	2	HL	North end of Holker Park	107	3	S	Ayside (probably)				
108				108	2	HL	North end of Holker Park	108	3	S	Ayside (probably)				
109	1	HL	Between Sandgate & Cannon Winder	109	2	HL	North end of Holker Park	109	3	S	Ayside (probably)				
110	1	HL	At or near Mireside	110	2	HL	North end of Holker Park	110	3	S	Ayside (probably)				
111	1	HL	At or near Sandgate	111	2	HL	North end of Holker Park	111	3	S	Ayside (probably)				
112				112	2	HL	North end of Holker Park	112	3	S	Ayside (probably)				
113	1	HL	At or near Mireside	113	2	HL	North end of Holker Park	113	3	S	Ayside (probably)				
114	1	HL	At or near Mireside	114	2	HL	Across road from Ellerside Farm	114	3	S	Ayside (probably)				
115	1	HL	West of Flookburgh towards Cannon Winder	115	2	HL	Across road from Ellerside Farm	115	3	S	Ayside (probably)				
116	1	HL	West of Flookburgh towards Cannon Winder	116	2	HL	Across road from Ellerside Farm	116	3	S	Ayside or near				
117	1	HL	West of Flookburgh towards Cannon Winder	117	2	HL	At or near Ellerside Farm	117	3	S	Ayside or near				
118	1	HL	Between South West Flookburgh & Mireside	118	2	HL	At or near Ellerside Farm	118	3	S	Ayside (probably)				
119	1	HL	Between South West Flookburgh & Mireside	119	2	HL	At or near Ellerside Farm	119	3	S	Ayside (probably)				
120	1	HL	Between South West Flookburgh & Mireside	120	2	HL	Across road from Ellerside Farm	120	3	S	Ayside (probably)				
121	1	HL	Between South West Flookburgh & Mireside	121	2	HL	Across road from Ellerside Farm	121	3	S	Ayside or near				
122	1	HL	West of Flookburgh towards Cannon Winder	122	2	HL	North end of Holker Park	122	3	S	Ayside or near				
123	1	HL	Between South West Flookburgh & Mireside	123	2	HL	North end of Holker Park	123	3	S	Ayside or near				
124	1	HL	At or near Flookburgh South West	124	2	HL	North end of Holker Park	124	3	S	Ayside or near				
125	1	HL	At or near Flookburgh South West	125	2	HL	North end of Holker Park	125	3	S	Ayside or near				
126	1	HL	Between South West Flookburgh & Mireside	126	2	HL	North end of Holker Park	126	3	S	Ayside or near				
127	1	HL	Between South West Flookburgh & Mireside	127	2	HL	North end of Holker Park	127							
128	1	HL	Between South West Flookburgh & Mireside	128	2	HL	North end of Holker Park	128	3	S	Between Barber Green & Seatle				
129	1	HL	Between South West Flookburgh & Mireside	129	2	HL	North end of Holker Park	129							
130	1	HL	Between South West Flookburgh & Mireside	130				130	3	S	Between Barber Green & Seatle				
131	1	HL	Between South West Flookburgh & Mireside	131	2	HL	At or near Holker Hall	131	3	S	Between Barber Green & Seatle				
132	1	HL	Between South West Flookburgh & Mireside	132	2	HL	At or near Holker Hall	132							
133	1	HL	Between South West Flookburgh & Mireside	133	2	HL	At or near Holker Hall	133							
134	1	HL	Between South West Flookburgh & Mireside	134	2	HL	At or near Holker Hall	134	3	S	Between Barber Green & Seatle				
135	1	HL	Between South West Flookburgh & Mireside	135	2	HL	At or near Holker Hall	135	3	S	Between Barber Green & Seatle				
136	1	HL	Between South West Flookburgh & Mireside	136	2	HL	Between Holker Park & Cark Beck	136	3	S	Between Ayside & High Newton				
137	1	HL	Between South West Flookburgh & Mireside	137	2	HL	At or near Holker Hall	137	3	S	Between Ayside & Barber Green				
138	1	HL	Between South West Flookburgh & Mireside	138	2	HL	At or near Holker Hall	138	3	S	Between Ayside & Barber Green				
139	1	HL	Between South West Flookburgh & Mireside	139	2	HL	At or near Holker Hall	139	3	S	Between Ayside & Barber Green				
140	1	HL	Between South West Flookburgh & Mireside	140	2	HL	At or near Holker Hall	140	3	S	Between Ayside & Barber Green				
141	1	HL	Between South West Flookburgh & Mireside	141				141	3	S	Between Ayside & Barber Green				
142	1	HL	At or near Mireside	142	2	HL	Between Holker Park & Cark Beck	142	3	S	Between Ayside & Barber Green				
143	1	HL	At or near Mireside	143	2	HL	At or near Quarry Flat	143	3	S	Between Ayside & Barber Green				
144	1	HL	At or near Mireside	144				144	3	S	At or near Ayside South				
145	1	HL	At or near Mireside	145	2	HL	Holker Park	145	3	S	At or near Ayside South				
146				146	2	HL	Holker Park	146	3	S	At or near Ayside South				
147				147	2	HL	Holker Park	147	3	S	Ayside (probably)				
148				148	2	HL	At or near Quarry Flat	148	3	S	Ayside (probably)				
149				149	2	HL	At or near Quarry Flat	149	3	S	Ayside or near				
150	1	HL	Between South West Flookburgh & Mireside	150	2	HL	At or near Quarry Flat	150	3	S	Between Ayside & Barber Green				

Approximate Property Locations on Enclosure Survey Map Ref WPR 89/3/2/23

Area 1			
Field #	Area	Township	Approximate location
151	1	HL	Between South West Flookburgh & Mireside
152	1	HL	Between South West Flookburgh & Mireside
153	1	HL	At or near South East Flookburgh
154	1	HL	At or near South East Flookburgh
155	1	HL	At or near South East Flookburgh
156	1	HL	At or near South East Flookburgh
157	1	HL	At or near South East Flookburgh
158	1	HL	At or near South East Flookburgh
159	1	HL	At or near South East Flookburgh
160	1	HL	At or near South East Flookburgh
161	1	HL	At or near South East Flookburgh
162	1	HL	At or near South East Flookburgh
163	1	HL	At or near South East Flookburgh
164	1	HL	At or near South East Flookburgh
165	1	HL	At or near South East Flookburgh
166	1	HL	At or near South East Flookburgh
167	1	HL	At or near South East Flookburgh
168	1	HL	At or near South East Flookburgh
169	1	HL	At or near South East Flookburgh
170	1	HL	At or near South East Flookburgh
171	1	HL	At or near South East Flookburgh
172	1	HL	At or near South East Flookburgh
173	1	HL	At or near South East Flookburgh
174	1	HL	At or near South East Flookburgh
175	1	HL	Between Outerthwaite & Flookburgh
176	1	HL	Between Outerthwaite & Flookburgh
177	1	HL	Between Outerthwaite & Flookburgh
178	1	HL	Between Outerthwaite & Flookburgh
179	1	HL	Between Outerthwaite & Flookburgh
180	1	HL	Between Outerthwaite & Flookburgh
181	1	HL	Between Outerthwaite & Flookburgh
182	1	HL	Between Outerthwaite & Flookburgh
183	1	HL	Between Outerthwaite & Flookburgh
184	1	HL	Between Outerthwaite & Flookburgh
185	1	HL	Between Outerthwaite & Flookburgh
186	1	HL	Between Outerthwaite & Flookburgh
187	1	HL	Between Outerthwaite & Flookburgh
188	1	HL	Between Outerthwaite & Flookburgh
189	1	HL	Between Outerthwaite & Flookburgh
190	1	HL	Between Outerthwaite & Flookburgh
191	1	AL	Between Outerthwaite & Flookburgh
192	1	AL	At or near Outerthwaite
193	1	AL	At or near Outerthwaite
194	1	AL	At or near Outerthwaite
195			
196	1	AL	At or near Outerthwaite
197	1	AL	At or near Outerthwaite
198	1	AL	At or near Outerthwaite
199	1	AL	At or near Outerthwaite
200	1	AL	At or near Outerthwaite

Area 2			
Field #	Area	Township	Approximate location
151	2	HL	At or near Quarry Flat
152	2	HL	At or near Quarry Flat
153	2	HL	At or near Quarry Flat
154	2	HL	At or near Quarry Flat
155	2	HL	At or near Quarry Flat
156	2	HL	At or near Quarry Flat
157	2	HL	At or near Quarry Flat
158	2	HL	At or near Quarry Flat
159	2	HL	At or near Quarry Flat
160	2	HL	At or near Quarry Flat
161	2	HL	At or near Quarry Flat
162	2	HL	At or near Quarry Flat
163	2	HL	Holker Park
164	2	HL	Holker Park
165	2	HL	Holker Park
166			
167	2	HL	Between Quarry Flat & Holker Village
168	2	HL	Between Quarry Flat & Holker Village
169	2	HL	Between Quarry Flat & Holker Village
170	2	HL	Between Quarry Flat & Holker Village
171			
172	2	HL	Between Quarry Flat & Holker Village
173	2	HL	Between Quarry Flat & Holker Village
174	2	HL	Between Quarry Flat & Holker Village
175	2	HL	Between Quarry Flat & Holker Village
176	2	HL	Between Holker Park & Cark Beck
177	2	HL	Between Holker Park & Cark Beck
178	2	HL	Between Quarry Flat & Holker Village
179	2	HL	Between Quarry Flat & Holker Village
180	2	HL	Between Quarry Flat & Cark Village
181	2	HL	Between Quarry Flat & Cark Village
182	2	HL	Between Quarry Flat & Cark Village
183	2	HL	Between Quarry Flat & Cark Village
184	2	HL	Between Holker Park & Cark Beck
185	2	HL	Between Holker Park & Cark Beck
186			
187			
188			
189			
190	2	HL	Between Quarry Flat & Holker Village
191	2	HL	Between Holker Park & Cark Beck
192	2	HL	Between Holker Park & Cark Beck
193			
194			
195			
196	2	HL	Between Holker Park & Cark Beck
197	2	HL	Between Holker Park & Cark Beck
198	2	HL	North Cark
199	2	HL	North Cark
200			

Area 3			
Field #	Area	Township	Approximate location
151	3	S	Ayside or near
152	3	S	Ayside (probably)
153	3	S	At or near Ayside South
154	3	S	At or near Ayside South
155	3	S	Between Ayside & Barber Green
156	3	S	Between Ayside & Barber Green
157	3	S	Between Ayside & Barber Green
158	3	S	Between Ayside & Barber Green
159	3	S	Between Ayside & Barber Green
160	3	S	Between Ayside & High Newton
161	3	S	Between Ayside & High Newton
162	3	S	Ayside or near
163	3	S	Ayside or near
164	3	S	Ayside or near
165	3	S	Ayside or near
166	3	S	Ayside or near
167	3	S	At or near Ayside South
168	3	S	At or near Ayside South
169	3	S	Between Ayside & Barber Green
170	3	S	Between Ayside & Barber Green
171	3	S	Between Ayside & Barber Green
172	3	AU	Near High Newton (probably)
173	3	AU	Near High Newton (probably)
174	3	AU	Near High Newton
175	3	AU	Near High Newton
176	3	AU	Near High Newton
177	3	AU	Near High Newton
178	3	AU	Near High Newton
179	3	AU	At High Newton (probably)
180	3	AU	At High Newton (probably)
181	3	AU	At High Newton (probably)
182	3	AU	At High Newton (probably)
183	3	AU	At High Newton (probably)
184	3	AU	At High Newton (probably)
185	3	AU	Near High Newton
186			
187	3	AU	Near High Newton
188			
189	3	AU	Between High Newton & Barber Green
190	3	AU	Between High Newton & Barber Green
191	3	S	Between High Newton & Barber Green
192	3	S	Between Ayside & Barber Green
193	3	AU	North West of High Newton
194	3	AU	North West of High Newton
195	3	S	Between Ayside & Barber Green
196	3	S	Between Ayside & Barber Green
197			
198	3	S	Near to or at Barber Green
199	3	S	Near to or at Barber Green
200	3	S	At Barber Green (probably)

Area 4			
Field #	Area	Township	Approximate location



Approximate Property Locations on Enclosure Survey Map Ref WPR 89/3/2/23

Area 1				Area 2				Area 3				Area 4			
Field #	Area	Township	Approximate location	Field #	Area	Township	Approximate location	Field #	Area	Township	Approximate location	Field #	Area	Township	Approximate location
201	1	AL	West of Wraysholme; South of Outerthwaite	201	2	HL	Cark Mill	201	3	S	At Barber Green				
202	1	AL	West of Wraysholme; South of Outerthwaite	202				202	3	S	Between Ayside & Barber Green				
203	1	AL	West of Wraysholme; South of Outerthwaite	203	2	HL	North Cark	203	3	S	At Barber Green				
204	1	AL	West of Wraysholme; South of Outerthwaite	204				204	3	S	At Barber Green				
205	1	AL	West of Wraysholme; South of Outerthwaite	205				205							
206	1	AL	West of Wraysholme; South of Outerthwaite	206				206	3	S	At Barber Green				
207	1	AL	At or near Outerthwaite	207	2	HL	At or near Cark North	207	3	S	Between Ayside & Barber Green				
208	1	AL	At or near Outerthwaite	208	2	HL	At or near Cark North	208	3	S	Between Ayside & Barber Green				
209	1	AL	At or near Outerthwaite	209	2	HL	At or near Cark North	209							
210	1	AL	At or near Outerthwaite	210	2	HL	At or near Cark North	210	3	S	Near to or at Barber Green North				
211	1	AL	At or near Outerthwaite	211				211	3	S	Near to or at Barber Green North				
212	1	AL	Between Allithwaite & Outerthwaite	212	2	HL	Between Holker village & Cark	212							
213	1	AL	Between Allithwaite & Outerthwaite	213				213	3	S	Between Barber Green & High Cark				
214	1	AL	Between Allithwaite & Outerthwaite	214				214	3	S	Near to or at Barber Green North				
215	1	AL	At or near South Allithwaite	215	2	HL	Between Holker village & Cark	215	3	S	Near to or at Barber Green North				
216	1	AL	At or near South Allithwaite	216	2	HL	Between Holker village & Cark	216							
217	1	AL	At or near South Allithwaite	217				217							
218	1	AL	At or near South Allithwaite	218				218	3	S	Between Barber Green & High Cark				
219	1	AL	At or near South Allithwaite	219				219	3	S	Between Barber Green & High Cark				
220	1	AL	At or near South Allithwaite	220				220	3	S	Between Barber Green & High Cark				
221	1	AL	At or near South Allithwaite	221	2	HL	Between Holker village & Cark	221	3	S	Between Barber Green & High Cark				
222	1	AL	At or near South Allithwaite	222				222	3	S	Between Barber Green & High Cark				
223	1	AL	Between Wraysholme & Allithwaite	223	2	HL	Between Holker village & Cark	223	3	S	Between Barber Green & High Cark				
224	1	AL	Between Wraysholme & Allithwaite	224	2	HL	Between Holker village & Cark	224	3	S	Between Barber Green & High Cark				
225	1	AL	Between Wraysholme & Allithwaite	225				225	3	S	Between Barber Green & Greaves				
226	1	AL	Between Wraysholme & Allithwaite	226				226	3	S	Between Barber Green & Greaves				
227	1	AL	Between Wraysholme & Allithwaite	227				227	3	S	Between Barber Green & Greaves				
228	1	AL	Between Wraysholme & Allithwaite	228	2	HL	Between Holker village & Cark	228	3	S	Between Barber Green & Greaves				
229	1	AL	Between Wraysholme & Allithwaite	229	2	HL	Between Holker village & Cark	229	3	S	Between Barber Green & Greaves				
230	1	AL	Between Wraysholme & Allithwaite	230	2	HL	Between Holker village & Cark	230	3	S	Between Barber Green & Greaves				
231	1	AL	Between Wraysholme & Allithwaite	231	2	HL	Between Holker village & Cark	231	3	S	Between Barber Green & Greaves				
232	1	AL	Between Wraysholme & Allithwaite	232	2	HL	Between Holker village & Cark	232	3	S	Between Barber Green & Greaves				
233	1	AL	At or near South Allithwaite	233				233	3	S	Between Barber Green & Greaves				
234	1	AL	At or near South Allithwaite	234	2	HL	Between Rosthwaite & Low Bank Side	234	3	S	Between Barber Green & Greaves				
235	1	AL	Between Wraysholme & Allithwaite	235	2	AL	Between Rosthwaite & Low Bank Side	235	3	S	Between Barber Green & Greaves				
236	1	AL	At or near South Allithwaite	236	2	AL	Between Rosthwaite & Low Bank Side	236							
237	1	AL	Between Wraysholme & Allithwaite	237				237	3	S	Between Barber Green & Greaves				
238	1	AL	Between Wraysholme & Allithwaite	238				238							
239	1	AL	Between Wraysholme & Allithwaite	239	2	AL	Between 3 Dollies & High Bank Side	239							
240	1	AL	Between Wraysholme & Allithwaite	240	2	AL	Between 3 Dollies & High Bank Side	240	3	S	Between Barber Green & Greaves				
241	1	AL	At or near Wraysholme	241	2	AL	Between 3 Dollies & High Bank Side	241	3	S	Between Barber Green & Greaves				
242	1	AL	At or near Wraysholme	242	2	AL	Between 3 Dollies & High Bank Side	242	3	S	Between Barber Green & Greaves				
243	1	AL	At or near Wraysholme	243	2	HU	At or near High Bank Side	243	3	S	Between Barber Green & Greaves				
244	1	AL	At or near Wraysholme	244	2	HU	At or near High Bank Side	244	3	S	Between Barber Green & Greaves				
245	1	AL	At or near Wraysholme	245				245	3	S	Between Barber Green & Greaves				
246	1	AL	At or near Wraysholme	246	2	HU	At or near High Bank Side	246	3	S	Between Barber Green & Greaves				
247	1	AL	At or near Wraysholme	247	2	HU	At or near High Bank Side	247	3	S	Between Barber Green & Greaves				
248	1	AL	At or near Wraysholme	248				248	3	S	Between Barber Green & Greaves				
249	1	AL	At or near Wraysholme	249				249	3	S	Between Barber Green & Greaves				
250	1	AL	At or near Wraysholme	250				250	3	S	At Barber Green (probably)				

Approximate Property Locations on Enclosure Survey Map Ref WPR 89/3/2/23

Area 1				Area 2				Area 3				Area 4			
Field #	Area	Township	Approximate location	Field #	Area	Township	Approximate location	Field #	Area	Township	Approximate location	Field #	Area	Township	Approximate location
251	1	AL	At or near Wraysholme	251	2	HU	At or near High Bank Side	251	3	S	At Barber Green (probably)				
252	1	AL	Between Blenket & Wraysholme	252	2	HU	At or near High Bank Side	252	3	S	At Barber Green				
253	1	AL	Between Blenket & Wraysholme	253	2	HU	At or near High Bank Side	253	3	S	At Barber Green (probably)				
254	1	AL	Between Blenket & Wraysholme	254	2	HU	At or near High Bank Side	254	3	S	At Barber Green (probably)				
255	1	AL	Between Blenket & Wraysholme	255	2	HU	At or near High Bank Side	255	3	S	At Barber Green				
256	1	AL	Between Blenket & Wraysholme	256	2	HU	At or near High Bank Side	256	3	S	At or near Barber Green				
257	1	AL	Between Blenket & Wraysholme	257	2	HU	At or near High Bank Side	257	3	S	At Barber Green				
258	1	AL	Between Blenket & Wraysholme	258	2	HU	At or near High Bank Side	258	3	S	At Barber Green (probably)				
259	1	AL	Between Blenket & Wraysholme	259	2	HU	Between Walton Hall & Cartmel Park	259	3	S	Between Barber Green & Headhouse				
260	1	AL	Between Blenket & Wyke	260				260	3	AU	Between Barber Green & Headhouse				
261	1	AL	At or near Blenket	261	2	AL	Between Cartmel & High Bank Side	261	3	AU	Between High Newton & Barber Green				
262	1	AL	At or near Blenket	262	2	AL	West of Headless Cross adjoining River	262	3	AU	Near or at High Newton				
263	1	AL	At or near Blenket	263	2	AL	Between Cartmel & High Bank Side	263	3	AU	Between High Newton & Barber Green				
264	1	AL	At or near Blenket	264	2	AL	West of Rd from Churchtown to Headless Cross	264	3	AU	Between High Newton & Barber Green				
265	1	AL	Between Blenket & Kirkhead End	265	2	AL	Headless Cross Cartmel	265	3	AU	Between High Newton & Barber Green				
266	1	AL	Between Blenket & Wraysholme	266	2	AL	Headless Cross Cartmel	266							
267	1	AL	Between Blenket & Kirkhead End	267	2	AL	Between Clogger & Beck & Headless Cross	267	3	AU	Between High Newton & Barber Green				
268	1	AL	Between Blenket & Wraysholme	268	2	AL	Near Clogger Beck, Cartmel Churchtown	268	3	AU	Between Barber Green & Headhouse				
269	1	AL	Between Blenket & Wyke	269	2	AL	At Clogger Beck, Cartmel Churchtown	269	3	AU	Between High Newton & Barber Green				
270	1	AL	Between Blenket & Wraysholme	270				270							
271	1	AL	Between Blenket & Wraysholme	271	2	AL	South side of Cartmel Causeway	271							
272	1	AL	Between Blenket & Kirkhead End	272				272	3	S	Between Barber Green & Headhouse				
273	1	AL	Between Blenket & Kirkhead End	273	2	AL	Cartmel Headless Cross	273	3	S	Between Barber Green & Headhouse				
274	1	AL	Between Blenket & Kirkhead End	274	2	AL	Cartmel Pig & Whistle	274	3	S	Between Barber Green & Greaves				
275	1	AL	Between Blenket & Wyke	275				275	3	S	Between Barber Green & Greaves				
276	1	AL	Between Blenket & Wyke	276				276	3	S	Between Barber Green & Greaves				
277	1	AL	Between Blenket & Wyke	277				277	3	S	Between Barber Green & Greaves				
278	1	AL	Between Blenket & Wyke	278				278	3	S	Between Barber Green & Greaves				
279	1	AL	Between Blenket & Wyke	279				279	3	S	At or near Greaves (probably)				
280	1	AL	Between Blenket & Wyke	280				280	3	S	At or near Greaves				
281	1	AL	Between Blenket & Kirkhead End	281				281	3	S	At or near Greaves				
282	1	AL	Between Blenket & Kirkhead End	282				282	3	S	At or near Greaves				
283	1	AL	Between Blenket & Kirkhead End	283	2	AL	North side of Cartmel Causeway	283	3	S	At or near Greaves				
284	1	AL	Between Blenket & Wyke	284				284	3	S	At or near Greaves (probably)				
285	1	AL	At or near Wyke	285	2	AL	Cartmel between Priory & Barngarth	285	3	S	At or near Greaves (probably)				
286	1	AL	At or near Wyke	286	2	AL	Cartmel between Priory & Barngarth	286	3	S	At or near Greaves (probably)				
287	1	AL	At or near Wyke	287				287	3	S	At or near Greaves (probably)				
288	1	AL	At or near Wyke	288				288	3	S	At or near Greaves (probably)				
289	1	AL	At or near Wyke	289	2	AL	Cartmel Aynsome Rd Smithy	289	3	S	At or near Greaves				
290	1	AL	At or near Wyke	290				290	3	S	At or near Greaves				
291	1	AL	Between Wyke & Humphrey Head	291				291	3	S	At or near Greaves				
292	1	AL	Between Wyke & Humphrey Head	292				292	3	S	At or near Greaves				
293	1	AL	Between Wyke & Humphrey Head	293				293	3	S	At or near Greaves				
294	1	AL	At or near Humphrey Head	294				294	3	S	At or near Greaves				
295	1	AL	At or near Humphrey Head	295				295	3	BE	At or near Greaves				
296	1	AL	At or near Humphrey Head	296				296	3	S	At or near Greaves				
297	1	AL	At or near Humphrey Head	297	2	AL	Cartmel Churchtown on Aynsome Road	297	3	BE	South East of Greaves				
298	1	AL	At or near Humphrey Head	298	2	AL	North Cartmel Churchtown	298	3	S	East of Greaves				
299	1	AL	At or near Humphrey Head	299	2	AL	Cartmel Churchtown on Aynsome Road	299	3	BE	South East of Greaves				
300	1	AL	At or near Humphrey Head	300	2	AL	North Cartmel Churchtown	300	3	BE	South East of Greaves				

Approximate Property Locations on Enclosure Survey Map Ref WPR 89/3/2/23

Area 1				Area 2				Area 3				Area 4			
Field #	Area	Township	Approximate location	Field #	Area	Township	Approximate location	Field #	Area	Township	Approximate location	Field #	Area	Township	Approximate location
301	1	AL	Between Kents Bank & Kirkhead End	301	2	AL	Cartmel Churchtown North East	301	3	S	Between Headhouse & Greaves Farm				
302	1	AL	Between Kents Bank & Kirkhead End	302	2	AL	Cartmel Churchtown North East	302	3	S	Between Headhouse & Greaves Farm				
303	1	AL	Between Kents Bank & Kirkhead End	303				303	3	S	Between Headhouse & Greaves Farm				
304	1	AL	Between Kents Bank & Kirkhead End	304				304	3	BE	Between Headhouse & Greaves Farm				
305	1	AL	Between Kents Bank & Kirkhead End	305				305	3	BE	Between Headhouse & Greaves Farm				
306	1	AL	Between Kents Bank & Kirkhead End	306	2	AL	North of Cartmel Chruchtown	306	3	BE	Between Headhouse & Greaves Farm				
307	1	AL	Between Kents Bank & Kirkhead End	307	2	AL	North of Cartmel Chruchtown	307	3	BE	Between Headhouse & Greaves Farm				
308	1	AL	Between Kents Bank & Kirkhead End	308				308	3	BE	Between Headhouse & Greaves Farm				
309	1	AL	Between Kents Bank & Kirkhead End	309	2	AL	Cartmel Churchyard	309	3	BE	Between Headhouse & Greaves Farm				
310	1	AL	Between Kents Bank & Kirkhead End	310	2	AL	Cartmel Churchtown North East	310	3	BE	Between Headhouse & Greaves Farm				
311	1	AL	Between Kents Bank & Kirkhead End	311				311	3	BE	Between Headhouse & Greaves Farm				
312				312	2	AL	Between Cartmel Priory & Barngarth	312	3	BE	Between Headhouse & Greaves Farm				
313	1	AL	At or near Blenket	313				313	3	BE	Between Headhouse & Greaves Farm				
314	1	AL	Near Road Junction South of Allithwaite	314				314	3	S	Between Headhouse & Greaves Farm				
315	1	AL	Near Road Junction South of Allithwaite	315				315	3	S	Between Headhouse & Greaves Farm				
316	1	AL	Near Road Junction South of Allithwaite	316				316	3	S	Between Headhouse & Greaves Farm				
317	1	AL	Near Road Junction South of Allithwaite	317				317							
318	1	AL	Near Road Junction South of Allithwaite	318				318	3	S	Near Headhouse				
319	1	AL	Near Road Junction South of Allithwaite	319	2	HU	At or near Cartmel Park now Racecourse	319	3	AU	Near Headhouse				
320	1	AL	Near Road Junction South of Allithwaite	320				320	3	AU	At Headhouse (probably)				
321	1	AL	Between Kents Bank & Kirkhead End	321				321	3	AU	At Headhouse (probably)				
322	1	AL	Between Kents Bank & Kirkhead End	322				322	3	AU	Between Headhouse & Greaves Farm				
323	1	AL	Between Kents Bank & Kirkhead End	323				323	3	AU	Between Headhouse & Greaves Farm				
324	1	AL	Between Kents Bank & Kirkhead End	324				324	3	AU	Between Headhouse & Greaves Farm				
325	1	AL	Between Kents Bank & Kirkhead End	325				325	3	AU	At Headhouse (probably)				
326	1	AL	Between Kents Bank & Kirkhead End	326				326	3	AU	Near Headhouse				
327	1	AL	Between Kents Bank & Kirkhead End	327				327	3	AU	Near Headhouse				
328	1	AL	Between Kents Bank & Kirkhead End	328				328	3	AU	Near Headhouse				
329	1	AL	Between Kents Bank & Kirkhead End	329	2	AL	At or near Cartmel Churchtown South	329	3	AU	Between High Newton & Headhouse				
330	1	AL	At or near Kents Bank	330				330	3	AU	Between High Newton & Headhouse				
331	1	AL	Between Kents Bank & Kirkhead End	331	2	AL	West of Rd from Churchtown to Headless Cross	331	3	AU	Between High Newton & Headhouse				
332	1	AL	Between Kents Bank & Kirkhead End	332				332	3	AU	Between High Newton & Headhouse				
333	1	AL	Between Kents Bank & Kirkhead End	333				333	3	AU	Between Low Newton & Barber Green				
334	1	AL	At or near Kents Bank	334				334	3	AU	Between Low Newton & Headhouse				
335	1	AL	At or near Kents Bank	335				335	3	AU	Between Low Newton & Headhouse				
336	1	AL	At or near Kents Bank	336				336	3	AU	Between Low Newton & Barber Green				
337	1	AL	At or near Kents Bank	337				337	3	AU	Between Low Newton & Barber Green				
338	1	AL	At or near Kents Bank	338				338	3	AU	Between Low Newton & Headhouse				
339	1	AL	At or near Kents Bank	339	2	HU	At or near Cartmel Park now Racecourse	339	3	AU	Between Low Newton & Headhouse				
340	1	AL	At or near Kents Bank	340				340	3	AU	Between Low Newton & Headhouse				
341	1	AL	At or near Kents Bank	341				341	3	AU	Between Low Newton & Head House				
342	1	AL	At or near Kents Bank	342	2	HU	North Cartmel Churchtown	342	3	AU	Between Low Newton & Headhouse				
343	1	AL	At or near Kents Bank	343	2	HU	North Cartmel Churchtown	343	3	AU	Between Low Newton & Headhouse				
344	1	AL	At or near Kents Bank	344	2	HU	North Cartmel Churchtown	344							
345	1	AL	At or near Kents Bank	345	2	HU	At or near Cartmel Park now Racecourse	345	3	AU	Between Low Newton & Headhouse				
346	1	AL	At or near Kents Bank	346	2	HU	At or near Cartmel Park now Racecourse	346							
347	1	AL	At or near Kents Bank	347	2	HU	At or near Cartmel Park now Racecourse	347	3	AU	Near Headhouse (probably)				
348	1	AL	At or near Kents Bank	348				348							
349	1	AL	At or near Kents Bank	349				349	3	AU	Near Headhouse				
350	1	AL	At or near Kents Bank	350	2	AL	West of Headless Cross adjoining River	350	3	AU	Near Headhouse				

Approximate Property Locations on Enclosure Survey Map Ref WPR 89/3/2/23

Area 1				Area 2				Area 3				Area 4			
Field #	Area	Township	Approximate location	Field #	Area	Township	Approximate location	Field #	Area	Township	Approximate location	Field #	Area	Township	Approximate location
351	1	AL	At or near Kents Bank	351	2	AL	West of Headless Cross adjoining River	351	3	AU	Near Headhouse (probably)				
352	1	AL	At or near Kents Bank	352	2	HU	At or near Cartmel Park now Racecourse	352	3	AU	Near Headhouse				
353	1	AL	At or near Kents Bank	353				353	3	AU	Near Headhouse				
354	1	AL	At or near Kents Bank	354	2	HU	Between Walton Hall & Cartmel Park	354	3	AU	Near Headhouse				
355	1	AL	At or near Kents Bank	355				355	3	AU	Near Headhouse				
356	1	AL	At or near Kents Bank	356	2	HU	At or near High Bank Side	356	3	AU	Between Headhouse & Cartmel Lane				
357	1	AL	At or near Kents Bank	357	2	HU	At or near High Bank Side	357							
358	1	AL	At or near Kents Bank	358	2	HU	At or near High Bank Side	358	3	AU	Between Headhouse & Cartmel Lane				
359	1	AL	At or near Kents Bank	359	2	HU	At or near Walton Hall	359	3	AU	Between Headhouse & Cartmel Lane				
360	1	AL	At or near Kents Bank	360	2	HU	At or near Walton Hall	360	3	AU	North of Cartmel Lane				
361	1	AL	At or near Kents Bank	361	2	HU	At or near Walton Hall	361	3	AU	North of Cartmel Lane				
362	1	AL	At or near Kents Bank	362	2	HU	At or near Walton Hall	362	3	AU	North of Cartmel Lane				
363	1	AL	At or near Kents Bank	363	2	HU	At or near Walton Hall	363							
364	1	AL	At or near Kents Bank	364	2	HU	At or near Walton Hall	364	3	AU	North of Cartmel Lane				
365	1	AL	At or near Kents Bank	365	2	HU	At or near Walton Hall	365							
366	1	AL	At or near Kents Bank	366	2	HU	At or near Walton Hall	366	3	AU	North of Cartmel Lane				
367	1	AL	At or near Kents Bank	367	2	HU	At or near Walton Hall	367							
368	1	AL	At or near Kents Bank	368	2	HU	Between Walton Hall & Cartmel Park	368	3	AU	North of Cartmel Lane				
369	1	AL	At or near Kents Bank	369	2	HU	Between Walton Hall & Cartmel Park	369							
370	1	AL	At or near Kents Bank	370	2	HU	At or near Cartmel Park now Racecourse	370	3	AU	Near Headhouse				
371	1	AL	At or near Kents Bank	371	2	HU	Between Walton Hall & Cartmel Park	371	3	AU	Near Headhouse				
372	1	AL	At or near Kents Bank	372				372							
373	1	AL	At or near Kents Bank	373	2	HU	Between Walton Hall & Cartmel Park	373	3	AU	Near Headhouse				
374	1	AL	At or near Kents Bank	374				374							
375	1	AL	At or near Kents Bank	375	2	HU	At or near Hill	375	3	AU	Near Headhouse				
376	1	AL	At or near Kents Bank	376				376	3	AU	Between Low Newton & Headhouse				
377	1	AL	At or near Cart Lane	377	2	HU	At or near Hill	377							
378	1	AL	At or near Cart Lane	378	2	HU	At or near Hill	378	3	AU	Newton Fell near Back of Fell Road				
379	1	AL	At or near Cart Lane	379	2	HU	At or near Well Know	379	3	AU	Between Low Newton & Headhouse				
380	1	AL	At or near Cart Lane	380	2	HU	At or near Well Know	380	3	AU	Between Low Newton & Headhouse				
381	1	AL	At or near Cart Lane	381	2	HU	At or near Well Know	381	3	AU	Between Low Newton & Headhouse				
382	1	AL	At or near Cart Lane	382	2	HU	At or near Well Know	382	3	AU	Between Low Newton & Headhouse				
383	1	AL	At or near Cart Lane	383	2	HU	At or near Well Know	383	3	AU	Between Low Newton & Headhouse (probably)				
384	1	AL	At or near Cart Lane	384	2	HU	At or near Well Know	384	3	AU	Between Low Newton & Cartmel Lane				
385	1	AL	At or near Cart Lane	385	2	HU	At or near Well Know	385	3	AU	Between Low Newton & Cartmel Lane				
386	1	AL	At or near Cart Lane	386	2	HU	At or near Well Know	386	3	AU	Between Low Newton & Cartmel Lane				
387	1	AL	At or near Cart Lane	387	2	HU	At or near Well Know	387	3	AU	Between Low Newton & Cartmel Lane				
388	1	AL	At or near Cart Lane	388	2	HU	At or near Well Know	388	3	AU	Between Low Newton & Cartmel Lane				
389	1	AL	At or near Cart Lane	389	2	HU	At or near Well Know	389	3	AU	Between Low Newton & Cartmel Lane				
390	1	AL	At or near Cart Lane	390	2	HU	At or near Well Know	390							
391	1	AL	At or near Cart Lane	391	2	HU	At or near Well Know	391	3	AU	Between Low Newton & Cartmel Lane				
392	1	AL	At or near Cart Lane	392	2	HU	At or near Well Know	392	3	AU	Between Low Newton & Cartmel Lane				
393	1	AL	At or near Cart Lane	393	2	HU	Across road from Garret House	393	3	AU	Between Low Newton & Cartmel Lane				
394	1	AL	At or near Cart Lane	394	2	HU	Across road from Garret House	394	3	AU	Between Low Newton & Cartmel Lane				
395	1	AL	At or near Cart Lane	395	2	HU	At or near Well Know	395	3	AU	Between Low Newton & Cartmel Lane				
396	1	AL	At or near Cart Lane	396	2	HU	At or near Well Know	396	3	AU	Between Low Newton & Cartmel Lane				
397	1	AL	At or near Cart Lane	397	2	HU	At or near Well Know	397	3	AU	Between Low Newton & Cartmel Lane				
398	1	AL	Near Low Fell Gate	398	2	HU	At or near Well Know	398	3	AU	Between Low Newton & Cartmel Lane				
399				399				399	3	AU	Between Low Newton & Cartmel Lane				
400	1	AL	Near Low Fell Gate	400				400	3	AU	Between Low Newton & Cartmel Lane				

Approximate Property Locations on Enclosure Survey Map Ref WPR 89/3/2/23

Area 1				Area 2				Area 3				Area 4			
Field #	Area	Township	Approximate location	Field #	Area	Township	Approximate location	Field #	Area	Township	Approximate location	Field #	Area	Township	Approximate location
401	1	AL	Near Low Fell Gate	401	2	HU	At or near Hard Cragg	401	3	AU	Between Low Newton & Cartmel Lane				
402	1	AL	At or near Cart Lane	402	2	HU	At or near Hard Cragg	402	3	AU	Between Low Newton & Cartmel Lane				
403	1	AL	At or near Cart Lane	403	2	HU	At or near Hard Cragg	403	3	AU	Between Low Newton & Cartmel Lane				
404	1	AL	Probably at Cart Lane	404	2	HU	At or near Hard Cragg	404	3	AU	Between Low Newton & Cartmel Lane				
405	1	AL	Probably at Cart Lane	405				405	3	AU	At or near Low Newton				
406	1	AL	Probably at Cart Lane	406				406	3	AU	At or near Low Newton				
407	1	AL	Probably at Cart Lane	407	2	HU	At or near Hard Cragg	407	3	AU	At or near Low Newton				
408	1	AL	Probably at Cart Lane	408	2	HU	At or near Hard Cragg	408	3	AU	At Low Newton (probably)				
409	1	AL	Probably at Cart Lane	409	2	HU	At or near Hard Cragg	409	3	AU	At Low Newton (probably)				
410	1	AL	Near Low Fell Gate	410	2	HU	At or near Hard Cragg	410	3	AU	At Low Newton (probably)				
411	1	AL	Near Low Fell Gate	411	2	HU	At or near Hard Cragg	411	3	AU	At Low Newton (probably)				
412	1	AL	Near Middle Fell Gate	412	2	HU	At or near Hard Cragg	412	3	AU	At Low Newton (probably)				
413				413	2	HU	At or near Hard Cragg	413	3	AU	At Low Newton (probably)				
414	1	AL	At or near Middle Fell Gate	414	2	HU	At or near Wall Nook	414	3	AU	At Low Newton (probably)				
415	1	AL	At or near Middle Fell Gate	415	2	HU	At or near Wall Nook	415	3	AU	At Low Newton (probably)				
416	1	AL	At or near Middle Fell Gate	416	2	HU	At or near Wall Nook	416	3	AU	At or near Low Newton				
417	1	AL	At or near Middle Fell Gate	417	2	HU	At or near Wall Nook	417							
418	1	AL	At or near Middle Fell Gate	418	2	HU	At or near Wall Nook	418	3	AU	At or near Low Newton				
419	1	AL	At or near Middle Fell Gate	419	2	HU	Between Over Ridge & Beck Side	419	3	AU	At or near Low Newton				
420	1	AL	At or near Middle Fell Gate	420	2	HU	At or near Wall Nook	420	3	AU	At or near Low Newton				
421	1	AL	At or near Middle Fell Gate	421	2	HU	Between Over Ridge & Wall Nook	421	3	AU	At or near Low Newton				
422	1	AL	At or near Middle Fell Gate	422	2	HU	At or near Wall Nook	422	3	AU	Between Low Newton & Headhouse				
423	1	AL	At or near Middle Fell Gate	423	2	HU	Between Over Ridge & Wall Nook	423	3	AU	Between Low Newton & Headhouse				
424	1	AL	At or near Middle Fell Gate	424	2	HU	At or near Hard Cragg	424	3	AU	Between Low Newton & Headhouse				
425	1	AL	At or near Middle Fell Gate	425	2	HU	At or near Hard Cragg	425	3	AU	At or near Low Newton				
426	1	AL	At or near Middle Fell Gate	426	2	HU	At or near Hard Cragg	426	3	AU	At or near Low Newton				
427	1	AL	At or near Low Fell Gate	427	2	HU	Between Over Ridge & Beck Side	427	3	AU	At or near Low Newton				
428	1	AL	At or near Low Fell Gate	428	2	HU	Between Wall Nook & Becksides	428							
429	1	AL	At or near Low Fell Gate	429	2	HU	Between Wall Nook & Becksides	429	3	AU	At or near Low Newton				
430	1	AL	Near Low Fell Gate	430	2	HU	Between Wall Nook & Becksides	430	3	AU	At or near Low Newton				
431	1	AL	Between Allotments E of Allithwaite & Grange Road	431	2	HU	Between Wall Nook & Becksides	431	3	AU	At or near Low Newton				
432	1	AL	Between Allotments E of Allithwaite & Grange Road	432	2	HU	Between Wall Nook & Becksides	432	3	AU	At or near Low Newton				
433	1	AL	Between Allotments E of Allithwaite & Grange Road	433	2	HU	At or near Wall Nook	433	3	AU	At or near Low Newton				
434	1	AL	Between Allotments E of Allithwaite & Grange Road	434	2	HU	At or near Wall Nook	434	3	AU	At or near Low Newton				
435	1	AL	Between Allotments E of Allithwaite & Grange Road	435	2	HU	At or near Wall Nook	435							
436	1	AL	Between Allotments E of Allithwaite & Grange Road	436	2	HU	At or near Wall Nook	436	3	AU	At or near Low Newton				
437	1	AL	Between Allotments E of Allithwaite & Grange Road	437	2	HU	At or near Wall Nook	437	3	AU	At or near Low Newton				
438	1	AL	Between Allotments E of Allithwaite & Grange Road	438	2	HU	Between Wall Nook & Becksides	438	3	AU	At or near Low Newton				
439	1	AL	Between Allotments E of Allithwaite & Grange Road	439	2	HU	Between Wall Nook & Becksides	439							
440	1	AL	Between Allotments E of Allithwaite & Grange Road	440	2	HU	Between Wall Nook & Becksides	440	3	AU	Between Low Newton & Headhouse				
441	1	AL	Between Allotments E of Allithwaite & Grange Road	441	2	HU	Between Wall Nook & Becksides	441	3	AU	Between High Newton & Headhouse				
442	1	AL	Between Allotments E of Allithwaite & Grange Road	442	2	HU	Between Wall Nook & Becksides	442	3	AU	Between High Newton & Headhouse				
443	1	AL	Between Allotments E of Allithwaite & Grange Road	443	2	HU	At or near Beck Side	443	3	AU	Between High & Low Newton				
444	1	AL	Between Allotments E of Allithwaite & Grange Road	444	2	HU	At or near Beck Side	444	3	AU	At or near Low Newton				
445	1	AL	Between Allotments E of Allithwaite & Grange Road	445	2	HU	At or near Beck Side	445	3	AU	Between High & Low Newton				
446	1	AL	Between Allotments E of Allithwaite & Grange Road	446	2	HU	At or near Beck Side	446	3	AU	Between High & Low Newton				
447	1	AL	Between Allotments E of Allithwaite & Grange Road	447	2	HU	At or near Beck Side	447	3	AU	Between High Newton & Headhouse				
448	1	AL	Between Allotments E of Allithwaite & Grange Road	448	2	HU	At or near Beck Side	448	3	AU	Between High Newton & Headhouse				
449	1	AL	Between Allotments E of Allithwaite & Grange Road	449	2	HU	At or near Beck Side	449	3	AU	Between High Newton & Headhouse				
450	1	AL	Between Allotments E of Allithwaite & Grange Road	450	2	HU	At or near Beck Side	450	3	AU	Between High & Low Newton				

Approximate Property Locations on Enclosure Survey Map Ref WPR 89/3/2/23

Area 1				Area 2				Area 3				Area 4			
Field #	Area	Township	Approximate location	Field #	Area	Township	Approximate location	Field #	Area	Township	Approximate location	Field #	Area	Township	Approximate location
451				451	2	HU	At or near Beck Side	451	3	AU	At or near High Newton				
452	1	AL	Between Allotments E of Allithwaite & Grange Road	452	2	HU	At or near Beck Side	452	3	AU	At or near High Newton				
453	1	AL	Between Allotments E of Allithwaite & Grange Road	453				453	3	AU	At or near High Newton				
454	1	AL	Between Allotments E of Allithwaite & Grange Road	454	2	HU	Between Beck Side & Greenbank	454	3	AU	At or near High Newton				
455	1	AL	Between Allotments E of Allithwaite & Grange Road	455				455	3	AU	At or near High Newton				
456	1	AL	Between Allotments E of Allithwaite & Grange Road	456	2	HU	Between Beck Side & Greenbank	456	3	AU	At or near High Newton				
457	1	AL	Between Allotments E of Allithwaite & Grange Road	457				457	3	AU	At or near High Newton				
458	1	AL	Between Allotments E of Allithwaite & Grange Road	458				458	3	AU	At or near High Newton				
459	1	AL	Between Allotments E of Allithwaite & Grange Road	459				459	3	AU	At or near High Newton				
460	1	AL	Between Allotments E of Allithwaite & Grange Road	460				460	3	AU	At or near High Newton				
461	1	AL	Between Allotments E of Allithwaite & Grange Road	461				461							
462	1	AL	Between Allotments E of Allithwaite & Grange Road	462	2	HU	Between Beck Side & Greenbank	462	3	AU	Near the South of High Newton				
463	1	AL	Between Allotments E of Allithwaite & Grange Road	463	2	HU	Between Beck Side & Greenbank	463							
464	1	AL	Between Allotments E of Allithwaite & Grange Road	464	2	HU	Between Becksides Lane & Greenbank Lane	464							
465	1	AL	Between Allotments E of Allithwaite & Grange Road	465				465							
466	1	AL	Between Allotments E of Allithwaite & Grange Road	466				466	3	AU	Near the South of High Newton				
467	1	AL	Between Allotments E of Allithwaite & Grange Road	467				467	3	AU	Near the South of High Newton				
468	1	AL	Between Allotments E of Allithwaite & Grange Road	468				468	3	AU	Near the South of High Newton				
469	1	AL	Between Allotments E of Allithwaite & Grange Road	469	2	HU	Between Becksides Lane & Greenbank Lane	469	3	AU	Near the South of High Newton				
470	1	AL	At or near South Allithwaite	470				470	3	AU	Between High & Low Newton				
471	1	AL	At or near South Allithwaite	471	2	HU	Between Becksides Lane & Greenbank Lane	471	3	AU	At High Newton (probably)				
472	1	AL	At or near South Allithwaite	472	2	HU	Between Becksides Lane & Greenbank Lane	472							
473	1	AL	At or near South Allithwaite	473				473							
474	1	AL	At or near South Allithwaite	474	2	HU	Between Becksides Lane & Greenbank Lane	474	3	AU	At High Newton (probably)				
475	1	AL	At or near South Allithwaite	475	2	HU	Between Becksides Lane & Greenbank Lane	475	3	AU	At High Newton (probably)				
476	1	AL	At or near South Allithwaite	476	2	HU	Between Becksides Lane & Greenbank Lane	476	3	AU	At High Newton (probably)				
477	1	AL	At or near South Allithwaite	477	2	HU	Between Becksides Lane & Greenbank Lane	477	3	AU	At High Newton (probably)				
478	1	AL	At or near South Allithwaite	478				478	3	AU	At High Newton (probably)				
479	1	AL	At or near South West Allithwaite	479	2	HU	Between Becksides Lane & Greenbank Lane	479	3	AU	At or near Low Newton				
480	1	AL	At or near South West Allithwaite	480	2	HU	Between Becksides Lane & Greenbank Lane	480	3	AU	At or near Low Newton				
481	1	AL	At or near South West Allithwaite	481	2	HU	Between Becksides Lane & Greenbank Lane	481	3	AU	At or near Low Newton				
482	1	AL	At or near South West Allithwaite	482	2	HU	Between Becksides Lane & Greenbank Lane	482	3	AU	At or near Low Newton (probably)				
483	1	AL	At or near South West Allithwaite	483	2	HU	Between Becksides Lane & Greenbank Lane	483	3	AU	At or near Low Newton				
484	1	AL	At or near South West Allithwaite	484				484	3	AU	At or near Low Newton (probably)				
485	1	AL	At or near South West Allithwaite	485				485	3	AU	At or near Low Newton				
486	1	AL	At or near South West Allithwaite	486	2	HU	Between Becksides Lane & Greenbank Lane	486	3	AU	Between Low Newton & Moss End				
487	1	AL	At or near South West Allithwaite	487	2	HU	Between Becksides Lane & Greenbank Lane	487	3	AU	Between Low Newton & Moss End				
488	1	AL	At or near South West Allithwaite	488				488	3	AU	Between Low Newton & Moss End				
489	1	AL	At or near South West Allithwaite	489				489	3	AU	Between Low Newton & Moss End				
490	1	AL	At or near South West Allithwaite	490	2	HU	Between Becksides Lane & Greenbank Lane	490	3	AU	Between Low Newton & Moss End				
491	1	AL	At or near South West Allithwaite	491	2	HU	Between Becksides Lane & Greenbank Lane	491	3	AU	At or near Low Newton				
492	1	AL	At or near South West Allithwaite	492	2	HU	Between Becksides Lane & Greenbank Lane	492	3	AU	At or near Low Newton				
493	1	AL	At or near South West Allithwaite	493	2	HU	Between Becksides Lane & Greenbank Lane	493	3	AU	At or near Low Newton				
494	1	AL	At or near South West Allithwaite	494				494	3	AU	At or near Low Newton				
495	1	AL	At or near West Allithwaite	495	2	HU	Between Becksides Lane & Greenbank Lane	495	3	AU	At or near Low Newton (probably)				
496	1	AL	At or near West Allithwaite	496	2	HU	Between Becksides Lane & Greenbank Lane	496	3	AU	At or near Low Newton (probably)				
497	1	AL	At or near West Allithwaite	497	2	HU	At Tanley	497	3	AU	At or near Low Newton (probably)				
498	1	AL	At or near West Allithwaite	498	2	HU	At Tanley	498	3	AU	At or near Low Newton				
499	1	AL	At or near West Allithwaite	499	2	HU	Cartmel Grammar School	499	3	AU	At or near Low Newton				
500	1	AL	At or near Barn Hey	500	2	HU	Cartmel Grammar School	500	3	AU	At or near Low Newton				

Approximate Property Locations on Enclosure Survey Map Ref WPR 89/3/2/23

Area 1				Area 2				Area 3				Area 4			
Field #	Area	Township	Approximate location	Field #	Area	Township	Approximate location	Field #	Area	Township	Approximate location	Field #	Area	Township	Approximate location
501	1	AL	At or near Barn Hey	501	2	HU	Between Grammar School & Aynsome Road	501	3	AU	Near Moss End Farm				
502	1	AL	At or near Barn Hey	502	2	HU	Between Grammar School & Aynsome Road	502	3	AU	Near Moss End Farm				
503	1	AL	At or near Barn Hey	503	2	HU	Between Grammar School & Aynsome Road	503	3	AU	Near Moss End Farm				
504	1	AL	At or near Barn Hey	504	2	HU	Between Grammar School & Aynsome Road	504	3	AU	Near Moss End Farm				
505	1	AL	At or near Barn Hey	505	2	AL	Between Grammar School & Aynsome Road	505	3	AU	Near Moss End Farm				
506	1	AL	At or near Barn Hey	506	2	AL	Cartmel Churchtown on Aynsome Road	506	3	AU	Near Moss End Farm				
507	1	AL	At or near Barn Hey	507	2	AL	Between Grammar School & Aynsome Road	507	3	AU	Near Moss End Farm				
508	1	AL	At or near Barn Hey	508	2	AL	Between Grammar School & Aynsome Road	508	3	AU	Moss End Farm (probably)				
509	1	AL	Adjoining main road near Boarbank Lodge	509	2	BE	Between Grammar School & Aynsome Road	509	3	AU	Between Cartmel Lane & Moss End Farm				
510	1	AL	At or near Boarbank	510	2	BE	At or near Aynsome	510	3	AU	Between Cartmel Lane & Moss End Farm				
511	1	AL	At or near Boarbank	511	2	BE	Between Grammar School & Aynsome Road	511	3	AU	Between Cartmel Lane & Moss End Farm				
512	1	AL	At or near Boarbank	512	2	BE	Between Grammar School & Aynsome Road	512	3	AU	Between Cartmel Lane & Moss End Farm				
513	1	AL	At or near Boarbank	513	2	BE	Between Grammar School & Aynsome Road	513	3	AU	Between Cartmel Lane & Moss End Farm				
514	1	AL	At or near Boarbank	514	2	BE	Between Grammar School & Aynsome Road	514	3	AU	Between Cartmel Lane & Moss End Farm				
515	1	AL	At or near Boarbank	515	2	HU	Between Grammar School & Aynsome Road	515	3	AU	Adjoins Cartmel Lane near top				
516	1	AL	At or near Boarbank	516	2	HU	Between Grammar School & Aynsome Road	516	3	AU	Adjoins Cartmel Lane near top				
517	1	AL	Adjoining main road near Boarbank Lodge	517	2	HU	Between Grammar School & Aynsome Road	517	3	AU	Adjoins Cartmel Lane near top				
518	1	AL	Adjoining main road near Boarbank Lodge	518	2	BE	Between Grammar School & Aynsome Road	518	3	AU	Adjoins Cartmel Lane near top				
519	1	AL	Adjoining main road near Boarbank Lodge	519	2	BE	Near and South of Aynsome	519	3	AU	Adjoins Cartmel Lane near top				
520	1	AL	Between Applebury & Boarbank	520	2	BE	Near and South of Aynsome	520	3	AU	Adjoins Cartmel Lane near top				
521	1	AL	Between Applebury & Boarbank	521	2	BE	Near and South of Aynsome	521	3	AU	Adjoins Cartmel Lane near top				
522	1	AL	Between Applebury & Boarbank	522	2	BE	Near and South of Aynsome	522	3	AU	Adjoins Cartmel Lane near top				
523	1	AL	Between Boarbank & main road towards South	523	2	BE	Near and South of Aynsome	523	3	AU	Between Cartmel Lane & Moss End Farm				
524	1	AL	Between Boarbank & main road towards South	524	2	BE	Near and South of Aynsome	524	3	AU	Between Cartmel Lane & Moss End Farm				
525	1	AL	Between Boarbank & main road towards South	525	2	BE	At or near Aynsome	525	3	AU	Between Cartmel Lane & Moss End Farm				
526	1	AL	Between Boarbank & main road towards South	526	2	BE	At or near Aynsome	526	3	AU	Between Cartmel Lane & Moss End Farm				
527	1	AL	Between Boarbank & main road towards South	527	2	BE	At or near Aynsome	527	3	AU	Between Cartmel Lane & Moss End Farm				
528	1	AL	Adjoining main road near Boarbank Lodge	528	2	BE	At or near Aynsome	528	3	AU	Between Cartmel Lane & Ellerside Farm				
529	1	HL	Adjoining main road near Boarbank Lodge	529	2	BE	At or near Aynsome	529	3	AU	Between Cartmel Lane & Ellerside Farm				
530	1	HL	Adjoining main road near Boarbank Lodge	530	2	BE	At or near Aynsome	530	3	AU	Between Cartmel Lane & Ellerside Farm				
531	1	HL	South of Applebury	531	2	BE	At or near Aynsome	531	3	AU	Between Cartmel Lane & Ellerside Farm				
532	1	HL	South of Applebury	532	2	BE	At or near Aynsome	532	3	AU	Bewteen Hampsfield & Ellerside Farm				
533	1	HL	South of Applebury	533	2	HU	Between Greenbank Lane & Aynsome	533	3	AU	Bewteen Hampsfield & Ellerside Farm				
534	1	HL	Near Applebury	534	2	HU	Between Greenbank Lane & Aynsome	534	3	AU	Bewteen Hampsfield & Ellerside Farm				
535	1	HL	Near Applebury	535	2	HU	Between Greenbank Lane & Aynsome	535	3	AU	Bewteen Hampsfield & Ellerside Farm				
536	1	AL	South of Birkby Hall towards Applebury	536	2	BE	Between Greenbank Lane & Aynsome	536	3	AU	Bewteen Hampsfield & Ellerside Farm				
537	1	AL	South of Birkby Hall towards Applebury	537	2	HU	Between Greenbank Lane & Aynsome	537	3	AU	Bewteen Hampsfield & Ellerside Farm				
538	1	AL	South of Birkby Hall towards Applebury	538	2	BE	Between Greenbank Lane & Aynsome	538	3	AU	Bewteen Hampsfield & Ellerside Farm				
539	1	AL	At or near The Green	539	2	HU	Between Greenbank Lane & Aynsome	539	3	AU	Bewteen Hampsfield & Ellerside Farm				
540	1	AL	At or near The Green	540	2	BE	At or near Greenbank	540	3	AU	Bewteen Hampsfield & Ellerside Farm				
541	1	AL	At or near The Green	541	2	HU	At or near Greenbank	541	3	AU	Near Lindale				
542	1	AL	At or near The Green	542	2	HU	At or near Greenbank	542	3	AU	Between Cartmel Lane & Ellerside Farm				
543	1	HL	Between Green and North East Flookburgh	543	2	HU	At or near Greenbank	543	3	AU	Between Cartmel Lane & Ellerside Farm				
544	1	HL	Between Green and North East Flookburgh	544	2	BE	At or near Greenbank	544	3	AU	Near Lindale				
545	1	HL	Between Green and North East Flookburgh	545	2	BE	Between Greenbank Lane & Aynsome	545	3	AU	Between Cartmel Lane & Ellerside Farm				
546	1	HL	Between Green and North East Flookburgh	546	2	BE	At or near Aynsome	546	3	AU	Near Lindale				
547	1	HL	Between Green and North East Flookburgh	547	2	BE	At or near Aynsome	547	3	AU	Near Lindale				
548	1	HL	Between Green and North East Flookburgh	548	2	BE	At or near Aynsome	548	3	AU	Near Lindale				
549	1	HL	Between Green and North East Flookburgh	549				549	3	AU	Near Lindale				
550	1	HL	Between Green and North East Flookburgh	550				550	3	AU	Between Cartmel Lane & Ellerside Farm				

Approximate Property Locations on Enclosure Survey Map Ref WPR 89/3/2/23

Area 1				Area 2				Area 3				Area 4			
Field #	Area	Township	Approximate location	Field #	Area	Township	Approximate location	Field #	Area	Township	Approximate location	Field #	Area	Township	Approximate location
551	1	HL	Between Green and North East Flookburgh	551	2	BE	At or near Aynsome	551				551			
552	1	HL	Near Flookburgh to North East	552	2	BE	At or near Aynsome	552	3	AU	Near Lindale	552	3	AU	Near Lindale
553	1	HL	Near Flookburgh to North East	553	2	BE	At or near Aynsome	553	3	AU	Near Lindale	553	3	AU	Near Lindale
554	1	HL	Near Flookburgh to North East	554	2	BE	At or near Aynsome	554	3	AU	Near Lindale	554	3	AU	Near Lindale
555	1	HL	Near Flookburgh to North East	555	2	BE	At or near Aynsome	555	3	AU	Near Lindale	555	3	AU	Near Lindale
556	1	HL	Near Flookburgh to North East	556	2	BE	At or near Aynsome	556	3	AU	Near Lindale	556	3	AU	Near Lindale
557	1	HL	Near Flookburgh to North East	557	2	BE	At or near Aynsome	557	3	AU	Near Lindale	557	3	AU	Near Lindale
558	1	HL	Near Flookburgh to North East	558	2	BE	At or near Aynsome	558	3	AU	Near Lindale	558	3	AU	Near Lindale
559	1	HL	Near Flookburgh to North East	559	2	BE	At or near Aynsome	559	3	AU	Near Lindale	559	3	AU	Near Lindale
560	1	HL	Near Flookburgh to North East	560	2	BE	At or near Aynsome	560	3	AU	Near Lindale	560	3	AU	Near Lindale
561	1	HL	At Flookburgh North East	561	2	BE	At or near Aynsome	561	3	AU	Near Lindale	561	3	AU	Near Lindale
562	1	HL	At Flookburgh North East	562	2	BE	At or near Aynsome	562	3	AU	Near Lindale	562	3	AU	Near Lindale
563	1	HL	At Flookburgh North East	563	2	BE	At or near Aynsome	563	3	AU	Near Lindale	563	3	AU	Near Lindale
564	1	HL	At Flookburgh North East	564	2	BE	North of Aynsome	564	3	AU	Near Lindale	564	3	AU	Near Lindale
565	1	HL	At Flookburgh North East	565	2	BE	North of Aynsome	565	3	AU	Near Lindale	565	3	AU	Near Lindale
566	1	HL	At Flookburgh North East	566	2	BE	North of Aynsome	566	3	AU	Near Lindale	566	3	AU	Near Lindale
567	1	HL	At Flookburgh North East	567	2	BE	North of Aynsome	567	3	AU	Near Lindale	567	3	AU	Near Lindale
568	1	HL	At Flookburgh North East	568	2	BE	Between Aynsome & Field Broughton	568	3	AU	Near Lindale	568	3	AU	Near Lindale
569	1	HL	At Flookburgh North East	569	2	BE	Between Aynsome & Field Broughton	569	3	AU	Near Lindale	569	3	AU	Near Lindale
570	1	HL	At or near North East Flookburgh	570	2	BE	Between Aynsome & Field Broughton	570	3	AU	Near Lindale	570	3	AU	Near Lindale
571	1	HL	At or near North East Flookburgh	571	2	BE	Between Aynsome & Field Broughton	571	3	AU	Near Lindale	571	3	AU	Near Lindale
572	1	HL	At or near North East Flookburgh	572	2	BE	Between Aynsome & Field Broughton	572	3	AU	Near Lindale	572	3	AU	Near Lindale
573	1	HL	At or near North East Flookburgh	573	2	BE	Between Aynsome & Field Broughton	573	3	AU	Near Lindale	573	3	AU	Near Lindale
574	1	HL	Between Cark and Green Lane	574	2	BE	Between Aynsome & Field Broughton	574	3	AU	At Lindale (probably)	574	3	AU	At Lindale (probably)
575	1	HL	Between Cark and Green Lane	575	2	BE	Between Aynsome & Field Broughton	575	3	AU	Near Lindale	575	3	AU	Near Lindale
576	1	HL	Between Cark and Green Lane	576	2	BE	East of Greenbank	576	3	AU	At Lindale (probably)	576	3	AU	At Lindale (probably)
577	1	HL	Between Cark and Green Lane	577	2	BE	East of Greenbank	577	3	AU	At Lindale (probably)	577	3	AU	At Lindale (probably)
578	1	HL	Between Cark and Green Lane	578	2	BE	East of Greenbank	578	3	AU	At Lindale (probably)	578	3	AU	At Lindale (probably)
579	1	AL	At or near The Green	579	2	BE	East of Greenbank	579	3	AU	At Lindale (probably)	579	3	AU	At Lindale (probably)
580	1	AL	At or near The Green	580	2	BE	At or near Greenbank	580	3	AU	At Lindale (probably)	580	3	AU	At Lindale (probably)
581	1	AL	At or near The Green	581	2	BE	At or near Greenbank	581	3	AU	Near Lindale	581	3	AU	Near Lindale
582	1	AL	At or near The Green	582	2	BE	At or near Greenbank	582	3	AU	At Lindale (probably)	582	3	AU	At Lindale (probably)
583	1	HL	At or near South East Cark	583	2	BE	At or near Greenbank	583	3	AU	At Lindale (probably)	583	3	AU	At Lindale (probably)
584	1	HL	At or near South East Cark	584	2	BE	At or near Greenbank	584	3	AU	Near Lindale	584	3	AU	Near Lindale
585	1	HL	At or near South East Cark	585	2	BE	Between Greenbank & Field Broughton	585	3	AU	Near Lindale	585	3	AU	Near Lindale
586	1	HL	At or near South East Cark	586	2	BE	Between Greenbank & Field Broughton	586				586			
587	1	HL	At or near South East Cark	587	2	BE	Between Greenbank & Field Broughton	587				587			
588	1	HL	At or near South West Cark	588	2	BE	Between Greenbank & Field Broughton	588	3	AU	Between Ellerside Farm & Lindale	588	3	AU	Between Ellerside Farm & Lindale
589	1	HL	Between Cark & Flookburgh	589	2	BE	Between Greenbank & Field Broughton	589				589			
590	1	HL	Between Cark & Flookburgh	590	2	BE	Between Greenbank & Field Broughton	590				590			
591	1	HL	Between Cark & Flookburgh	591				591				591			
592	1	HL	At or near Cark South	592	2	BE	Between Greenbank & Wood Broughton	592	3	AU	Between Ellerside Farm & Lindale	592	3	AU	Between Ellerside Farm & Lindale
593	1	HL	At or near Cark South	593	2	BE	Between Greenbank & Wood Broughton	593	3	AU	Between Ellerside Farm & Lindale	593	3	AU	Between Ellerside Farm & Lindale
594	1	HL	At or near Cark South	594	2	BE	At or near Wood Broughton	594	3	AU	Between Ellerside Farm & Lindale	594	3	AU	Between Ellerside Farm & Lindale
595	1	HL	At or near Cark South	595	2	BE	At or near Wood Broughton	595				595			
596	1	HL	At or near Cark South	596	2	BE	At or near Wood Broughton	596				596			
597	1	HL	At or near Cark	597	2	BE	At or near Wood Broughton	597				597			
598	1	HL	At or near Cark	598	2	BE	At or near Wood Broughton	598				598			
599	1	HL	At or near South West Cark	599	2	BE	At or near Wood Broughton	599				599			
600	1	HL	At or near South West Cark	600	2	BE	At or near Wood Broughton	600	3	AU	Between Ellerside Farm & Lindale	600	3	AU	Between Ellerside Farm & Lindale



Approximate Property Locations on Enclosure Survey Map Ref WPR 89/3/2/23

Area 1				Area 2				Area 3				Area 4			
Field #	Area	Township	Approximate location	Field #	Area	Township	Approximate location	Field #	Area	Township	Approximate location	Field #	Area	Township	Approximate location
601	1	HL	At or near Cark	601	2	BE	At or near Wood Broughton	601							
602	1	HL	At or near Cark	602	2	BE	At or near Wood Broughton	602							
603	1	HL	At or near Cark	603	2	BE	At or near Wood Broughton	603	3	AU	Between Ellerside Farm & Lindale				
604	1	HL	At or near Cark	604	2	BE	At or near Wood Broughton	604	3	AU	Between Ellerside Farm & Lindale				
605	1	HL	South West of Cark	605	2	HU	At or near Townson Hill	605	3	AU	Between Ellerside Farm & Lindale				
606	1	HL	South West of Cark	606	2	HU	At or near Townson Hill	606	3	AU	Near Ellerside Farm				
607	1	HL	At or near Cark South	607	2	HU	At or near Townson Hill	607	3	AU	Near Ellerside Farm				
608	1	HL	At or near Cark South	608	2	HU	At or near Townson Hill	608	3	AU	Near Ellerside Farm				
609	1	HL	South West of Cark	609	2	HU	At or near Townson Hill	609	3	AU	Near Ellerside Farm				
610	1	HL	South West of Cark	610	2	HU	At or near Townson Hill	610							
611	1	HL	South West of Cark	611	2	HU	Between Beck Side & High Gateside	611	3	AU	Near Ellerside Farm				
612	1	HL	South West of Cark	612	2	HU	Between Beck Side & High Gateside	612							
613	1	HL	South West of Cark	613				613							
614	1	HL	South West of Cark	614	2	HU	Between Beck Side & High Gateside	614	3	AU	Near Ellerside Farm				
615	1	HL	South West of Cark	615	2	HU	Between Beck Side & High Gateside	615	3	AU	Near Ellerside Farm				
616	1	HL	South West of Cark	616				616	3	AU	Near Ellerside Farm				
617	1	HL	South West of Cark	617	2	HU	At or near Beck Side	617							
618	1	HL	South West of Cark	618	2	HU	At or near Beck Side	618							
619	1	HL	South West of Cark	619	2	HU	At or near Beck Side	619	3	AU	Near Ellerside Farm				
620	1	HL	South West of Cark	620	2	HU	At or near Beck Side	620	3	AU	Near Ellerside Farm				
621	1	HL	South West of Cark	621	2	HU	At or near Beck Side	621	3	AU	Near Ellerside Farm				
622	1	HL	South West of Cark	622	2	HU	At or near Beck Side	622	3	AU	Near Moss End Farm				
623	1	HL	South West of Cark	623	2	HU	At or near Beck Side	623	3	AU	Near Moss End Farm				
624	1	HL	West of Cark	624	2	HU	At or near Beck Side	624	3	AU	Near Moss End Farm				
625	1	HL	West of Cark	625	2	HU	At or near Beck Side	625	3	AU	Near Moss End Farm				
626	1	HL	South West of Cark	626	2	HU	At or near Beck Side	626							
627	1	HL	North West of Flookburgh	627	2	HU	Between Over Ridge & Beck Side	627							
628	1	HL	West of Cark	628	2	HU	Between Over Ridge & Beck Side	628	3	AU	Near Moss End Farm				
629	1	HL	West of Cark	629	2	HU	Between Over Ridge & Beck Side	629	3	AU	Near Moss End Farm				
630	1	HL	West of Cark	630	2	HU	Between Over Ridge & Beck Side	630	3	AU	Near Moss End Farm				
631	1	HL	At or near Sandgate	631	2	HU	At or near Beck Side	631	3	AU	Near Moss End Farm				
632	1	HL	At or near Sandgate	632	2	HU	At or near Beck Side	632	3	AU	Near Moss End Farm				
633	1	HL	At or near Sandgate	633	2	HU	At or near Beck Side	633	3	AU	Near Moss End Farm				
634	1	HL	West of Cark	634	2	HU	Between Beck Side & High Gateside	634	3	AU	Near Moss End Farm				
635	1	HL	North West of Flookburgh	635	2	HU	Between Beck Side & High Gateside	635							
636	1	HL	North West of Flookburgh	636	2	HU	Between Beck Side & High Gateside	636							
637	1	HL	West of Flookburgh	637	2	HU	Between Beck Side & High Gateside	637							
638	1	HL	West of Flookburgh	638	2	HU	Between Beck Side & High Gateside	638							
639	1	HL	West of Flookburgh	639	2	HU	Between Beck Side & High Gateside	639	3	AU	Near Moss End Farm				
640	1	HL	North West of Flookburgh	640	2	HU	Between Beck Side & High Gateside	640	3	AU	Near Moss End Farm				
641				641	2	HU	Between Beck Side & High Gateside	641	3	BE	Between Cartmel Lane & Hampsfield				
642	1	HL	North West of Flookburgh	642	2	HU	Between Beck Side & High Gateside	642	3	BE	Between Cartmel Lane & Hampsfield				
643	1	HL	North West of Flookburgh	643	2	HU	Between Beck Side & High Gateside	643	3	BE	Between Cartmel Lane & Hampsfield				
644	1	HL	North West of Flookburgh	644				644	3	BE	Between Cartmel Lane & Hampsfield				
645	1	HL	West of Flookburgh	645				645	3	BE	Between Cartmel Lane & Hampsfield				
646	1	HL	West of Flookburgh	646				646	3	BE	Between Cartmel Lane & Hampsfield				
647	1	HL	West of Flookburgh	647	2	HU	Between Beck Side & High Gateside	647	3	BE	Between Cartmel Lane & Hampsfield				
648	1	HL	At or near Cark South	648				648	3	BE	Between Cartmel Lane & Hampsfield				
649	1	HL	At or near North East Cark	649				649	3	BE	Between Cartmel Lane & Hampsfield				
650	1	HL	At or near North East Cark	650	2	HU	Between Beck Side & High Gateside	650	3	BE	Between Cartmel Lane & Hampsfield				

Approximate Property Locations on Enclosure Survey Map Ref WPR 89/3/2/23

Area 1				Area 2				Area 3				Area 4			
Field #	Area	Township	Approximate location	Field #	Area	Township	Approximate location	Field #	Area	Township	Approximate location	Field #	Area	Township	Approximate location
651	1	HL	At or near North East Cark	651	2	HU	Between Beck Side & High Gateside	651	3	BE	Between Cartmel Lane & Hampsfield				
652	1	HL	At or near North East Cark	652	2	HU	Between Beck Side & High Gateside	652	3	BE	Between Cartmel Lane & Hampsfield				
653	1	HL	At or near North East Cark	653				653	3	BE	Between Hampsfield & Lindale				
654	1	HL	At or near North East Cark	654	2	HU	Between Over Ridge & Beckside	654	3	BE	Between Hampsfield & Lindale				
655	1	HL	At or near North East Cark	655	2	HU	Between Beck Side & High Gateside	655	3	BE	Between Cartmel Lane & Hampsfield				
656	1	HL	At or near Flookburgh North West	656	2	HU	Near Over Ridge	656	3	BE	Between Cartmel Lane & Hampsfield				
657	1	HL	Between Cark & Flookburgh	657	2	HU	Near Over Ridge	657	3	BE	Between Cartmel Lane & Hampsfield				
658	1	HL	Between Cark & Flookburgh	658				658	3	BE	Between Cartmel Lane & Hampsfield				
659	1	HL	Between Cark & Flookburgh	659				659	3	BE	Between Cartmel Lane & Hampsfield				
660	1	HL	Between Cark & Flookburgh	660	2	HU	Near Over Ridge	660	3	BE	Between Cartmel Lane & Hampsfield				
661	1	HL	In North West Flookburgh	661	2	HU	At or near Over Ridge	661	3	BE	Between Cartmel Lane & Hampsfield				
662	1	HL	In North West Flookburgh	662	2	HU	South of Over Ridge	662	3	BE	Between Cartmel Lane & Hampsfield				
663	1	HL	In North West Flookburgh	663	2	HU	Near Over Ridge	663	3	BE	Between Cartmel Lane & Hampsfield				
664	1	HL	In North West Flookburgh	664	2	HU	South of Over Ridge	664	3	BE	Between Cartmel Lane & Hampsfield				
665	1	HL	In North West Flookburgh	665	2	HU	Between Burns Farm & Over Ridge	665	3	BE	Between Cartmel Lane & Hampsfield				
666	1	HL	In North West Flookburgh	666	2	HU	Between Burns Farm & Over Ridge	666	3	BE	Between Cartmel Lane & Hampsfield				
667	1	HL	At or near Flookburgh North West	667				667	3	BE	Between Cartmel Lane & Hampsfield				
668	1	HL	At or near Flookburgh North West	668	2	HU	Between Burns Farm & Over Ridge	668	3	BE	At or near Hampsfield				
669	1	HL	At or near Flookburgh North West	669				669	3	BE	At or near Hampsfield				
670	1	HL	At or near Flookburgh North West	670				670	3	BE	At or near Hampsfield				
671	1	HL	At or near Flookburgh North West	671	2	HU	Between Speel Bank & Over Ridge	671	3	BE	At or near Hampsfield				
672	1	HL	At or near Flookburgh North West	672	2	HU	Between Burns Farm & Over Ridge	672	3	BE	At or near Hampsfield				
673	1	HL	At or near Flookburgh North West	673	2	HU	Between Burns Farm & Over Ridge	673	3	BE	At or near Hampsfield				
674	1	HL	At or near Flookburgh North West	674	2	HU	Between Burns Farm & Over Ridge	674	3	BE	At or near Hampsfield				
675	1	HL	At or near Flookburgh North West	675	2	HU	Between Burns Farm & Over Ridge	675	3	BE	At or near Hampsfield				
676	1	HL	At or near Flookburgh North West	676	2	HU	Between Speel Bank & Burns Farm	676	3	BE	At or near Hampsfield				
677	1	HL	At or near Flookburgh North West	677	2	HU	Between Speel Bank & Burns Farm	677	3	BE	At or near Hampsfield				
678	1	HL	At or near Flookburgh North West	678	2	HU	Between Speel Bank & Burns Farm	678	3	BE	At or near Hampsfield				
679	1	HL	At or near Flookburgh North West	679	2	HU	Near Burns Farm	679	3	BE	At or near Hampsfield				
680	1	HL	At or near Flookburgh North West	680	2	HU	Near Burns Farm	680	3	BE	At or near Hampsfield				
681	1	HL	At or near Flookburgh North West	681	2	HU	Between Burns Farm & Over Ridge	681	3	BE	At or near Hampsfield				
682	1	HL	At or near Flookburgh North West	682	2	HU	Near Burns Farm	682	3	BE	At or near Hampsfield				
683	1	HL	Between Cark & Flookburgh	683	2	HU	Near Burns Farm	683	3	BE	At or near Hampsfield				
684	1	HL	At or near South West Cark	684	2	HU	Near Burns Farm	684	3	BE	At or near Hampsfield				
685	1	HL	At or near South West Cark	685				685	3	BE	At or near Hampsfield				
686				686	2	HU	Between Burns Farm & Over Ridge	686	3	BE	At or near Hampsfield				
687				687				687	3	BE	At or near Hampsfield				
688				688				688	3	BE	At or near Hampsfield				
689				689				689	3	BE	At or near Hampsfield				
690				690				690	3	BE	At or near Hampsfield				
691				691	2	HU	Between Burns Farm & Howbarrow	691	3	BE	At or near Hampsfield				
692	1	AL	Between Birkby & The Green	692	2	HU	Between Burns Farm & Howbarrow	692	3	BE	At or near Hampsfield				
693	1	AL	Between Birkby & The Green	693	2	HU	Between Burns Farm & Howbarrow	693	3	BE	At or near Hampsfield				
694	1	AL	Between Birkby & The Green	694				694	3	BE	At or near Hampsfield				
695	1	AL	Between Birkby & The Green	695				695	3	BE	At or near Hampsfield				
696	1	AL	Between Birkby & The Green	696	2	HU	Near Burns Farm	696	3	BE	At or near Hampsfield				
697	1	AL	Between Birkby & The Green	697				697	3	BE	Between Hampsfield & Lindale				
698	1	AL	Between Birkby & The Green	698	2	HU	Between Burns Farm & Howbarrow	698	3	BE	Between Hampsfield & Lindale				
699	1	AL	Between Birkby & The Green	699	2	HU	Between Burns Farm & Howbarrow	699	3	BE	Between Hampsfield & Lindale				
700	1	AL	Between Birkby & The Green	700	2	HU	Between Burns Farm & Howbarrow	700	3	BE	Between Hampsfield & Lindale				

Approximate Property Locations on Enclosure Survey Map Ref WPR 89/3/2/23

Area 1				Area 2				Area 3				Area 4			
Field #	Area	Township	Approximate location	Field #	Area	Township	Approximate location	Field #	Area	Township	Approximate location	Field #	Area	Township	Approximate location
701	1	AL	Between Birkby & The Green	701	2	HU	Between Burns Farm & Howbarrow	701	3	BE	Between Hampsfield & Lindale				
702	1	AL	Between Birkby & The Green	702	2	HU	Between Burns Farm & Howbarrow	702	3	BE	Between Hampsfield & Lindale				
703	1	AL	Between Birkby & The Green	703	2	HU	Between Burns Farm & Howbarrow	703	3	BE	Between Hampsfield & Lindale				
704	1	AL	Between Birkby & The Green	704	2	HU	Between Burns Farm & Howbarrow	704	3	BE	Between Hampsfield & Lindale				
705	1	AL	Between Middle Birkby & Gateside Farm	705	2	HU	At or near Hill	705	3	BE	Between Hampsfield & Lindale				
706	1	AL	Between Middle Birkby & Gateside Farm	706	2	HU	At or near Hill	706	3	BE	At or near Hampsfield				
707				707	2	HU	At or near Hill	707	3	BE	At or near Hampsfield				
708				708	2	HU	At or near Hill	708	3	BE	At or near Hampsfield				
709	1	AL	Between Middle Birkby & Gateside Farm	709	2	HU	Between Burns Farm & Howbarrow	709	3	BE	At or near Hampsfield				
710	1	AL	Between Middle Birkby & Gateside Farm	710	2	HU	At or near Hill	710	3	BE	At or near Hampsfield				
711	1	AL	Between Middle Birkby & Gateside Farm	711	2	HU	At or near Hill	711	3	BE	Between Blawith & Hampsfield				
712	1	AL	Between Middle Birkby & Gateside Farm	712				712	3	BE	Between Blawith & Hampsfield				
713	1	AL	Between Middle Birkby & Gateside Farm	713				713	3	BE	Between Blawith & Hampsfield				
714	1	AL	Between Middle Birkby & Gateside Farm	714				714	3	BE	Between Blawith & Hampsfield				
715	1	AL	Between Middle Birkby & Gateside Farm	715				715	3	BE	Between Blawith & Hampsfield				
716	1	AL	Between Middle Birkby & Gateside Farm	716	2	HU	At or near Hill	716	3	BE	Between Blawith & Hampsfield				
717	1	AL	Between Middle Birkby & Gateside Farm	717				717	3	BE	Between Blawith & Hampsfield				
718	1	AL	Between Middle Birkby & Gateside Farm	718	2	HU	At or near Hill	718	3	BE	Between Blawith & Hampsfield				
719	1	AL	Between Lower Birkby & Gateside Farm	719	2	HU	At or near Hill	719	3	BE	Between Blawith & Hampsfield				
720	1	AL	Between Lower Birkby & Gateside Farm	720	2	HU	At or near Howbarrow	720	3	BE	Between Blawith & Hampsfield				
721	1	AL	Between Lower Birkby & Gateside Farm	721	2	HU	At or near Howbarrow	721	3	BE	Between Blawith & Hampsfield				
722	1	AL	Between Lower Birkby & Gateside Farm	722	2	HU	At or near Howbarrow	722	3	BE	Between Blawith & Hampsfield				
723	1	AL	Between Lower Birkby & Gateside Farm	723	2	HU	At or near Howbarrow	723	3	BE	Between Blawith & Hampsfield				
724	1	AL	Between Cartmel - Allithwaite Rd & Lower Birkby	724	2	HU	At or near Howbarrow	724	3	BE	Between Blawith & Hampsfield				
725	1	AL	Between Cartmel - Allithwaite Rd & Lower Birkby	725	2	HU	At or near Howbarrow	725	3	BE	Between Blawith & Hampsfield				
726	1	AL	Between Cartmel - Allithwaite Rd & Lower Birkby	726	2	HU	At or near Howbarrow	726	3	BE	Between Blawith & Hampsfield				
727	1	AL	Between Cartmel - Allithwaite Rd & Lower Birkby	727	2	HU	At or near Howbarrow	727	3	BE	Between Blawith & Hampsfield				
728	1	AL	Between Cartmel - Allithwaite Rd & Lower Birkby	728	2	HU	At or near Howbarrow	728	3	BE	Between Blawith & Hampsfield				
729	1	AL	Between Cartmel - Allithwaite Rd & Lower Birkby	729	2	HU	At or near Howbarrow	729	3	BE	Between Blawith & Hampsfield				
730	1	AL	At or near Lower Birkby	730	2	HU	At or near Howbarrow	730	3	BE	Between Blawith & Hampsfield				
731	1	AL	At or near Lower Birkby	731	2	HU	At or near Howbarrow	731	3	BE	Near Blawith				
732	1	AL	At or near Lower Birkby	732	2	HU	Between Burns Farm & Howbarrow	732	3	BE	Near Blawith				
733	1	AL	At or near Lower Birkby	733	2	HU	Between Burns Farm & Howbarrow	733	3	BE	Near Blawith				
734	1	AL	Between Lower Birkby & The Pastures	734	2	HU	At or near Howbarrow	734	3	BE	Near Blawith				
735	1	AL	Between Lower Birkby & The Pastures	735	2	HU	At or near Howbarrow	735	3	BE	Near Blawith				
736	1	AL	Between Lower Birkby & The Pastures	736	2	HU	At or near Howbarrow	736	3	BE	Near Blawith				
737	1	AL	Between Lower Birkby & The Pastures	737				737	3	BE	Near Blawith				
738	1	AL	Between Lower Birkby & The Pastures	738	2	HU	Between Burns Farm & Howbarrow	738	3	BE	Near Blawith				
739	1	AL	Between Lower Birkby & The Pastures	739	2	HU	At or near Howbarrow	739	3	BE	Near Blawith				
740	1	AL	At or near Middle Birkby	740	2	HU	Between Burns Farm & Howbarrow	740	3	BE	Near Blawith				
741	1	AL	At or near Middle Birkby	741	2	HU	Between Burns Farm & Howbarrow	741	3	BE	Near Blawith				
742	1	AL	At or near Middle Birkby	742	2	HU	Between Burns Farm & Howbarrow	742	3	BE	Near Blawith				
743	1	AL	Between Middle Birkby & Pastures	743	2	HU	Between Burns Farm & Howbarrow	743	3	BE	Near Blawith				
744	1	AL	At or near The Pastures	744	2	HU	Near Burns Farm	744	3	BE	Near Blawith				
745	1	AL	Between Middle Birkby & Pastures	745				745	3	BE	Near Blawith				
746	1	AL	Between Middle Birkby & Pastures	746	2	HU	Near Burns Farm	746	3	BE	Near Blawith				
747	1	AL	At or near The Pastures	747	2	HU	Near Burns Farm	747	3	BE	Near Blawith				
748	1	AL	At or near Birkby Hall	748				748	3	BE	Near Blawith				
749	1	AL	At or near Birkby Hall	749				749	3	BE	Near Blawith				
750	1	AL	At or near Birkby Hall	750				750	3	BE	At Blawith				

Approximate Property Locations on Enclosure Survey Map Ref WPR 89/3/2/23

Area 1			
Field #	Area	Township	Approximate location
751	1	AL	At or near Birkby Hall
752	1	AL	At or near Birkby Hall
753	1	AL	At or near The Pastures
754	1	AL	At or near Birkby Hall
755	1	AL	At or near Birkby Hall
756	1	AL	At or near Birkby Hall
757	1	AL	At or near Birkby Hall
758	1	AL	At or near Birkby Hall
759	1	AL	At or near Birkby Hall
760	1	AL	At or near Birkby Hall
761	1	AL	At or near Birkby Hall
762	1	AL	At or near Birkby Hall
763	1	AL	At or near Birkby Hall
764	1	AL	At or near Birkby Hall
765	1	AL	At or near Birkby Hall
766	1	AL	At or near Birkby Hall
767	1	AL	At or near Birkby Hall
768	1	AL	Between Birkby Hall & The Green
769	1	AL	At or near Birkby Hall
770	1	AL	At or near Birkby Hall
771	1	AL	Birkby Hall Estate
772	1	AL	Birkby Hall Estate
773	1	AL	Birkby Hall Estate
774	1	AL	Birkby Hall Estate
775	1	AL	Birkby Hall Estate
776	1	AL	Between Birkby Hall & The Green
777	1	AL	Between Birkby Hall & The Green
778	1	AL	Between Birkby Hall & The Green
779	1	AL	Between Birkby Hall & The Green
780	1	AL	Between Birkby Hall & The Green
781	1	AL	Between Birkby Hall & The Green
782	1	AL	Between Birkby Hall & The Green
783	1	AL	Between Birkby Hall & The Green
784	1	AL	Between Birkby Hall & The Green
785	1	AL	Between Birkby Hall & The Green
786	1	AL	Between Birkby Hall & The Green
787	1	AL	Between Birkby Hall & The Green
788	1	AL	Near West of Templand
789	1	AL	Near West of Templand
790	1	AL	Near West of Templand
791	1	AL	Near West of Templand
792	1	AL	Near West of Templand
793	1	AL	Near West of Templand
794	1	AL	Near West of Templand
795	1	AL	Near West of Templand
796	1	AL	Near West of Templand
797	1	AL	Near West of Templand
798	1	AL	Near West of Templand
799	1	AL	Near West of Templand
800	1	AL	Near West of Templand

Area 2			
Field #	Area	Township	Approximate location
751	2	HU	Near Burns Farm
752	2	HU	Near Burns Farm
753	2	HU	Near Burns Farm
754	2	HU	Near Burns Farm
755	2	HU	Near Burns Farm
756	2	HU	Near Burns Farm
757	2	HU	Near Burns Farm
758	2	HU	Near Burns Farm
759			
760	2	HU	Between Speel Bank & Burns Farm
761			
762	2	HU	Between Speel Bank & Burns Farm
763	2	HU	Between Speel Bank & Burns Farm
764	2	HU	Between Speel Bank & Burns Farm
765	2	HU	Between Speel Bank & Burns Farm
766	2	HU	Near Speel Bank
767	2	HU	Near Speel Bank
768	2	HU	Near Speel Bank
769	2	HU	Near Speel Bank
770	2	HU	Near Speel Bank
771	2	HU	Near Speel Bank
772	2	HU	Near Speel Bank
773	2	HU	Near Speel Bank
774	2	HU	Near Speel Bank
775	2	HU	Near Speel Bank
776	2	HU	Near Speel Bank
777	2	HU	Near Speel Bank
778	2	HU	Near Speel Bank
779	2	HU	Near Speel Bank
780	2	HU	Near Speel Bank
781	2	HU	Near Speel Bank
782	2	HU	Near Speel Bank
783	2	HU	Near Speel Bank
784	2	HU	Near Speel Bank
785	2	HU	Near Speel Bank
786	2	HU	Near Speel Bank
787	2	HU	Near Speel Bank
788	2	HU	Near Speel Bank
789	2	HU	Near Speel Bank
790			
791	2	HU	Near Speel Bank
792	2	HU	Near Speel Bank
793	2	HU	Near Speel Bank
794			
795			
796			
797			
798	2	HU	Near Speel Bank
799	2	HU	Near Speel Bank
800	2	HU	Near Speel Bank

Area 3			
Field #	Area	Township	Approximate location
751	3	BE	At Blawith
752	3	AU	At Blawith
753	3	BE	Near Blawith
754	3	BE	Between Slack & Blawith
755	3	BE	Between Slack & Blawith
756	3	BE	Between Slack & Blawith
757	3	BE	Between Slack & Blawith
758	3	BE	Between Slack & Blawith
759	3	BE	Between Slack & Blawith
760	3	BE	Between Slack & Blawith
761	3	BE	Between Slack & Blawith
762	3	BE	Between Slack & Blawith
763	3	BE	Between Slack & Blawith
764	3	BE	Between Slack & Blawith
765	3	BE	Between Slack & Blawith
766	3	BE	Between Slack & Blawith
767	3	BE	Between Slack & Blawith
768	3	BE	Between Slack & Blawith
769	3	BE	Between Slack & Blawith
770	3	BE	Near Slack
771	3	BE	Near Slack
772	3	BE	Near Slack
773	3	BE	Near Slack
774	3	BE	Near Slack
775	3	BE	Near Slack
776	3	BE	Near Slack
777	3	BE	Near Slack
778	3	BE	Near Slack
779	3	BE	Near Slack
780	3	BE	At Slack
781	3	BE	At Slack
782	3	BE	At Slack
783	3	BE	At Slack
784	3	BE	At Slack
785	3	BE	At Slack
786	3	BE	Between Cartmel Lane & Hampsfield Hall
787	3	AU	North of Cartmel Lane
788	3	AU	North of Cartmel Lane
789	3	AU	North of Cartmel Lane
790	3	AU	North of Cartmel Lane
791	3	AU	North of Cartmel Lane
792	3	AU	North of Cartmel Lane
793	3	AU	North of Cartmel Lane
794	3	AU	North of Cartmel Lane
795	3	AU	North of Cartmel Lane
796	3	AU	North of Cartmel Lane
797	3	AU	North of Cartmel Lane
798	3	AU	North of Cartmel Lane
799	3	AU	North of Cartmel Lane
800	3	AU	North of Cartmel Lane

Area 4			
Field #	Area	Township	Approximate location

Approximate Property Locations on Enclosure Survey Map Ref WPR 89/3/2/23

Area 1				Area 2				Area 3				Area 4			
Field #	Area	Township	Approximate location	Field #	Area	Township	Approximate location	Field #	Area	Township	Approximate location	Field #	Area	Township	Approximate location
801	1	AL	Near West of Templand	801	2	HU	Near Speel Bank	801	3	AU	North of Cartmel Lane				
802	1	AL	Near West of Templand	802	2	HU	Near Speel Bank	802	3	AU	North of Cartmel Lane				
803				803	2	HU	Between Speelbank & Over Ridge	803	3	AU	North of Cartmel Lane				
804				804	2	HU	Between Speelbank & Over Ridge	804	3	AU	North of Cartmel Lane				
805				805	2	HU	Between Speelbank & Over Ridge	805	3	AU	North of Cartmel Lane				
806				806	2	HU	Between Speelbank & Over Ridge	806	3	BE	Between Broughton House & Four Lane Ends				
807	1	AL	At or near Templand	807	2	HU	Between Speelbank & Over Ridge	807	3	BE	Between Broughton House & Four Lane Ends				
808				808	2	HU	Near Over Ridge	808	3	BE	Between Broughton House & Four Lane Ends				
809	1	AL	At or near Templand	809	2	HU	At or near Over Ridge	809	3	BE	Between Broughton House & Four Lane Ends				
810	1	AL	At or near North Templand	810	2	BE	At or near Wood Broughton	810	3	BE	Between Broughton House & Four Lane Ends				
811				811	2	BE	At or near Wood Broughton	811	3	BE	Between Broughton House & Four Lane Ends				
812	1	AL	Between The Pastures & Templand	812				812	3	BE	Between Broughton House & Four Lane Ends				
813	1	AL	Between The Pastures & Templand	813	2	BE	North of Wood Broughton	813	3	BE	Between Broughton House & Four Lane Ends				
814	1	AL	Between The Pastures & Templand	814	2	BE	North of Wood Broughton	814	3	BE	SE of FB Village & Stoney Dale area				
815	1	AL	Between The Pastures & Templand	815	2	BE	North of Wood Broughton	815	3	BE	SE of FB Village & Stoney Dale area				
816	1	AL	Between The Pastures & Templand	816				816	3	BE	SE of FB Village & Stoney Dale area				
817	1	AL	Between The Pastures & Templand	817	2	BE	Between Wood Broughton & Sturdy's	817	3	BE	Between Broughton House & Four Lane Ends				
818	1	AL	Between The Pastures & Templand	818	2	BE	Between Wood Broughton & Sturdy's	818	3	BE	Between Broughton House & Four Lane Ends	818	4	S	At or near Newby Bridge
819	1	AL	Between The Pastures & Templand	819	2	BE	Between Wood Broughton & Sturdy's	819	3	BE	Between Broughton House & Four Lane Ends	819	4	S	At or near Newby Bridge
820	1	AL	Near The Pastures	820	2	BE	Between Wood Broughton & Sturdy's	820	3	BE	Between Broughton House & Four Lane Ends	820	4	S	At or near Newby Bridge
821	1	AL	Near The Pastures	821	2	BE	East of Sturdy's	821	3	BE	Between Broughton House & Four Lane Ends	821	4	S	At or near Newby Bridge
822	1	AL	Near The Pastures	822	2	BE	East of Sturdy's	822	3	BE	Between Broughton House & Four Lane Ends	822	4	S	At or near Newby Bridge
823	1	AL	Between The Pastures & Templand	823	2	BE	East of Sturdy's	823	3	BE	Between Broughton House & Four Lane Ends	823	4	S	At or near Newby Bridge
824	1	AL	Between Cartmel to Allithwaite Rd & High Fell Gate	824	2	BE	East of Sturdy's	824	3	BE	Between Broughton House & Four Lane Ends	824	4	S	Between Fellfoot & Newby Bridge
825	1	AL	Between Cartmel to Allithwaite Rd & High Fell Gate	825				825	3	BE	Between Broughton House & Four Lane Ends	825	4	S	Between Fellfoot & Newby Bridge
826	1	AL	Between Hags Lane & Allithwaite Rd, Cartmel	826	2	BE	East of Sturdy's	826	3	BE	Between Broughton House & Four Lane Ends	826	4	S	Between Fellfoot & Newby Bridge
827	1	AL	Between Cartmel to Allithwaite Rd & High Fell Gate	827				827	3	BE	Between Broughton House & Four Lane Ends	827	4	S	Between Fellfoot & Newby Bridge
828	1	AL	Between Hags Lane & Allithwaite Rd, Cartmel	828	2	BE	Between Wood Broughton & Sturdy's	828	3	BE	Near Broughton House	828	4	S	Between Fellfoot & Newby Bridge
829	1	AL	Between Cartmel to Allithwaite Rd & High Fell Gate	829	2	BE	Between Wood Broughton & Sturdy's	829	3	BE	Near Broughton House	829	4	S	Between Fellfoot & Newby Bridge
830	1	AL	Between Cartmel to Allithwaite Rd & High Fell Gate	830	2	BE	Between Wood Broughton & Sturdy's	830	3	BE	Near Broughton House	830			830
831	1	AL	Between Cartmel to Allithwaite Rd & High Fell Gate	831	2	BE	Between Wood Broughton & Sturdy's	831	3	BE	Between FB Village, Chapel & Broughton House	831	4	S	Between Fellfoot & Newby Bridge
832	1	AL	Between Cartmel to Allithwaite Rd & High Fell Gate	832	2	BE	Between Wood Broughton & Sturdy's	832	3	BE	Between FB Village, Chapel & Broughton House	832	4	S	Between Fellfoot & Newby Bridge
833	1	AL	Between Cartmel to Allithwaite Rd & High Fell Gate	833	2	BE	Between Wood Broughton & Sturdy's	833	3	BE	Near Broughton House	833	4	S	Between Fellfoot & Newby Bridge
834	1	AL	Between Cartmel to Allithwaite Rd & High Fell Gate	834	2	BE	Between Wood Broughton & Sturdy's	834	3	BE	Near Broughton House	834	4	S	Between Fellfoot & Newby Bridge
835	1	AL	Between Cartmel to Allithwaite Rd & High Fell Gate	835				835	3	BE	Between FB Chapel & Broughton House	835	4	S	Between Fellfoot & Newby Bridge
836	1	AL	Between Cartmel to Allithwaite Rd & High Fell Gate	836				836	3	BE	Between FB Chapel & Broughton House	836	4	S	Between Fellfoot & Newby Bridge
837	1	AL	Between Cartmel to Allithwaite Rd & High Fell Gate	837				837	3	BE	Between FB Chapel & Broughton House	837	4	S	Between Fellfoot & Newby Bridge
838	1	AL	Between Cartmel to Allithwaite Rd & High Fell Gate	838	2	BE	Between Wood Broughton & Field Broughton	838	3	BE	Between FB Chapel & Broughton House	838	4	S	Between Fellfoot & Newby Bridge
839	1	AL	Between Cartmel to Allithwaite Rd & High Fell Gate	839	2	BE	Between Wood Broughton & Field Broughton	839	3	BE	Between FB Chapel & Broughton House	839	4	S	Between Fellfoot & Newby Bridge
840	1	AL	Between Cartmel to Allithwaite Rd & High Fell Gate	840	2	BE	Between Wood Broughton & Field Broughton	840	3	BE	FB Chapel	840	4	S	Between Fellfoot & Newby Bridge
841	1	AL	Near The Pastures	841	2	BE	Between Wood Broughton & Field Broughton	841	3	BE	Between FB Village, Chapel & Broughton House	841	4	S	Between Fellfoot & Newby Bridge
842	1	AL	Near The Pastures	842	2	BE	Between Wood Broughton & Field Broughton	842	3	BE	Between FB Village, Chapel & Broughton House	842	4	S	Between Fellfoot & Newby Bridge
843	1	AL	Near The Pastures	843	2	BE	Between Wood Broughton & Field Broughton	843	3	BE	Between FB Village, Chapel & Broughton House	843	4	S	Between Fellfoot & Staveley Village
844	1	AL	Near The Pastures	844				844	3	BE	Between FB Village, Chapel & Broughton House	844	4	S	Between Fellfoot & Staveley Village
845	1	AL	Between Cartmel to Allithwaite Rd & High Fell Gate	845	2	BE	Between Wood Broughton & Field Broughton	845	3	BE	Between FB Village, Chapel & Broughton House	845			845
846	1	AL	Between Cartmel to Allithwaite Rd & High Fell Gate	846	2	BE	Between Wood Broughton & Field Broughton	846	3	BE	Between FB Village, Chapel & Broughton House	846	4	S	Between Fellfoot & Staveley Village
847	1	AL	Between Cartmel to Allithwaite Rd & High Fell Gate	847	2	BE	Between Wood Broughton & Field Broughton	847	3	BE	Centre of Field Broughton Village	847	4	S	Between Fellfoot & Staveley Village
848	1	AL	Between Cartmel to Allithwaite Rd & High Fell Gate	848	2	BE	Between Wood Broughton & Field Broughton	848	3	BE	Centre of Field Broughton Village	848	4	S	Between Fellfoot & Staveley Village
849	1	AL	Between Cartmel to Allithwaite Rd & High Fell Gate	849	2	BE	Between Wood Broughton & Field Broughton	849	3	BE	Centre of Field Broughton Village	849	4	S	Between Fellfoot & Staveley Village
850	1	AL	Between Cartmel to Allithwaite Rd & High Fell Gate	850				850	3	BE	Centre of Field Broughton Village	850	4	S	Between Fellfoot & Staveley Village

Approximate Property Locations on Enclosure Survey Map Ref WPR 89/3/2/23

Area 1				Area 2				Area 3				Area 4			
Field #	Area	Township	Approximate location	Field #	Area	Township	Approximate location	Field #	Area	Township	Approximate location	Field #	Area	Township	Approximate location
851	1	AL	At or near High Fell Gate	851				851	3	BE	Centre of Field Broughton Village	851	4	S	Between Fellfoot & Staveley Village
852	1	AL	At or near High Fell Gate	852				852	3	BE	Centre of Field Broughton Village	852			
853	1	AL	At or near High Fell Gate	853	2	BE	Between Sturdy's & Field Broughton Ch.	853	3	BE	Centre of Field Broughton Village	853	4	S	Between Fellfoot & Staveley Village
854	1	AL	At or near High Fell Gate	854	2	BE	Between Sturdy's & Field Broughton Ch.	854	3	BE	Centre of Field Broughton Village	854	4	S	Between Fellfoot & Staveley Village
855	1	AL	At or near High Fell Gate	855	2	BE	Between Sturdy's & Field Broughton Ch.	855	3	BE	Centre of Field Broughton Village	855	4	S	Between Fellfoot & Staveley Village
856	1	AL	At or near High Fell Gate	856	2	BE	Between Sturdy's & Field Broughton Ch.	856	3	BE	Centre of Field Broughton Village	856	4	S	Between Fellfoot & Staveley Village
857	1	AL	At or near High Fell Gate	857	2	BE	Between Sturdy's & Field Broughton Ch.	857	3	BE	Centre of Field Broughton Village	857	4	S	Between Fellfoot & Staveley Village
858	1	AL	At or near High Fell Gate	858	2	BE	Between Sturdy's & Field Broughton Ch.	858	3	BE	Centre of Field Broughton Village	858	4	S	Between Fellfoot & Staveley Village
859	1	AL	At or near High Fell Gate	859	2	BE	Between Sturdy's & Field Broughton Ch.	859	3	BE	Centre of Field Broughton Village	859	4	S	Between Fellfoot & Staveley Village
860	1	AL	At or near High Fell Gate	860				860	3	BE	Centre of Field Broughton Village	860	4	S	Between Fellfoot & Staveley Village
861	1	AL	Between Hags Lane & Allithwaite Road	861	2	BE	Between Sturdy's & Field Broughton Ch.	861	3	BE	Centre of Field Broughton Village	861	4	S	Between Fellfoot & Staveley Village
862	1	AL	Between Hags Lane & Allithwaite Road	862	2	BE	Between Sturdy's & Field Broughton Ch.	862	3	BE	Centre of Field Broughton Village	862	4	S	Between Fellfoot & Staveley Village
863	1	AL	Between Hags Lane & Allithwaite Road	863				863	3	BE	Centre of Field Broughton Village	863	4	S	Between Staveley & Newby Bridge
864	1	AL	Between Hags Lane & Allithwaite Road	864	2	BE	Between Study's & High Cark	864	3	BE	Centre of Field Broughton Village	864	4	S	Between Staveley & Newby Bridge
865	1	AL	Between Hags Lane & Allithwaite Road	865	2	BE	Between Study's & High Cark	865	3	BE	Centre of Field Broughton Village	865	4	S	Between Staveley & Newby Bridge
866	1	AL	Between Hags Lane & Allithwaite Road	866	2	BE	Between Study's & High Cark	866	3	BE	South adjoining FB village	866	4	S	Between Staveley & Newby Bridge
867	1	AL	Between Hags Lane & Allithwaite Road	867	2	BE	At or near Sturdy's	867	3	BE	Centre of Field Broughton Village	867	4	S	Between Staveley & Newby Bridge
868	1	AL	Between Hags Lane & Allithwaite Road	868	2	BE	At or near Sturdy's	868	3	BE	Centre of Field Broughton Village	868	4	S	Between Staveley & Newby Bridge
869	1	AL	Between Hags Lane & Allithwaite Road	869	2	BE	At or near Sturdy's	869	3	BE	Centre of Field Broughton Village	869	4	S	Between Staveley & Newby Bridge
870	1	AL	Between Hags Lane & Allithwaite Road	870	2	BE	At or near Sturdy's	870	3	BE	South adjoining FB village	870	4	S	Between Staveley & Newby Bridge
871	1	AL	Between Hags Lane & Allithwaite Road	871	2	BE	At or near Sturdy's	871	3	BE	South adjoining FB village	871	4	S	Between Staveley & Newby Bridge
872	1	AL	Between Hags Lane & Allithwaite Road	872	2	BE	At or near Sturdy's	872	3	BE	SE of FB Village & Stoney Dale area	872	4	S	Between Staveley & Newby Bridge
873	1	AL	Between Hags Lane & Allithwaite Road	873	2	BE	Between Study's & High Cark	873	3	BE	SE of FB Village & Stoney Dale area	873	4	S	Between Staveley & Newby Bridge
874	1	AL	Cartmel Town End	874				874	3	BE	SE of FB Village & Stoney Dale area	874	4	S	Between Staveley & Newby Bridge
875	1	AL	Between Hags Lane & Allithwaite Road	875	2	BE	Between Study's & High Cark	875	3	BE	SE of FB Village & Stoney Dale area	875	4	S	Between Staveley & Newby Bridge
876	1	AL	Cartmel Hags Lane South side	876	2	BE	Between Study's & High Cark	876	3	BE	SE of FB Village & Stoney Dale area	876	4	S	Between Staveley & Newby Bridge
877	1	AL	Cartmel Hags Lane South side	877	2	BE	Between Study's & High Cark	877	3	BE	SE of FB Village & Stoney Dale area	877			
				878				878	3	BE	SE of FB Village & Stoney Dale area	878	4	S	Between Staveley & Newby Bridge
				879				879	3	BE	SE of FB Village & Stoney Dale area	879	4	S	South of Staveley Village
				880				880	3	BE	SE of FB Village & Stoney Dale area	880	4	S	South of Staveley Village
				881				881	3	BE	SE of FB Village & Stoney Dale area	881	4	S	South of Staveley Village
				882	2	S	At or near High Cark	882	3	BE	SE of FB Village & Stoney Dale area	882	4	S	South of Staveley Village
				883	2	S	At or near High Cark	883	3	BE	SE of FB Village & Stoney Dale area	883	4	S	South of Staveley Village
				884	2	S	At or near High Cark	884	3	BE	SE of FB Village & Stoney Dale area	884	4	S	South of Staveley Village
				885	2	S	At or near High Cark	885	3	BE	Broughton Lodge & St.Andrew's Moor	885	4	S	South of Staveley Village
				886	2	S	At or near High Cark	886	3	BE	Broughton Lodge & St.Andrew's Moor	886	4	S	South of Staveley Village
				887	2	S	At or near High Cark	887	3	BE	Broughton Lodge & St.Andrew's Moor	887	4	S	South of Staveley Village
				888	2	S	At or near High Cark	888	3	BE	Broughton Lodge & St.Andrew's Moor	888	4	S	South of Staveley Village
				889	2	S	At or near High Cark	889	3	BE	Broughton Lodge & St.Andrew's Moor	889	4	S	South of Staveley Village
				890	2	S	At or near High Cark	890	3	BE	Broughton Lodge & St.Andrew's Moor	890	4	S	South of Staveley Village
				891	2	S	At or near High Cark	891	3	BE	Broughton Lodge & St.Andrew's Moor	891	4	S	South of Staveley Village
				892	2	S	At or near High Cark	892	3	BE	Broughton Lodge & St.Andrew's Moor	892	4	S	South of Staveley Village
				893				893	3	BE	Broughton Lodge & St.Andrew's Moor	893	4	S	South of Staveley Village
				894				894	3	BE	Broughton Lodge & St.Andrew's Moor	894	4	S	South of Staveley Village
				895				895	3	BE	Broughton Lodge & St.Andrew's Moor	895	4	S	South of Staveley Village
				896	2	S	At or near High Cark	896	3	BE	Broughton Lodge & St.Andrew's Moor	896	4	S	South of Staveley Village
				897	2	S	At or near High Cark	897	3	BE	Broughton Lodge & St.Andrew's Moor	897	4	S	South of Staveley Village
				898				898	3	BE	Broughton Lodge & St.Andrew's Moor	898	4	S	South of Staveley Village
				899				899	3	BE	Broughton Lodge & St.Andrew's Moor	899	4	S	West of Chapel House, Staveley
				900				900	3	BE	Between Longlands Farm & Hampsfield Hall	900	4	S	Between Staveley & Newby Bridge



Approximate Property Locations on Enclosure Survey Map Ref WPR 89/3/2/23

Area 1				Area 2				Area 3				Area 4			
Field #	Area	Township	Approximate location	Field #	Area	Township	Approximate location	Field #	Area	Township	Approximate location	Field #	Area	Township	Approximate location
951	2	S	North East of High Cark	951	2	S	North East of High Cark	951	3	AL	North East of Churchtown on Aynsome Road	951			
952	2	S	North East of High Cark	952	2	S	North East of High Cark	952	3	AL	North East of Churchtown on Aynsome Road	952	4	S	At or near Fellfoot
953	2	S	North East of High Cark	953	2	S	North East of High Cark	953	3	AL	North East of Churchtown on Aynsome Road	953	4	S	At or near Fellfoot
954	2	S	North East of High Cark	954	2	S	North East of High Cark	954				954	4	S	Between Fellfoot & Townhead
955	2	S	North East of High Cark	955	2	S	North East of High Cark	955				955	4	S	Between Fellfoot & Townhead
956	2	S	North East of High Cark	956	2	S	North East of High Cark	956	3	AL	North East of Pit Farm	956	4	S	At or near Fellfoot
957	2	S	North East of High Cark	957	2	S	North East of High Cark	957	3	AL	North East of Pit Farm	957	4	S	At or near Fellfoot
958				958				958	3	AL	North of Pit Farm	958	4	S	At or near Fellfoot
959				959				959	3	AL	North of Pit Farm	959	4	S	At or near Fellfoot
960				960				960	3	AL	Cartmel Aynsome Rd near Town End	960	4	S	At or near Fellfoot
961				961				961	3	AL	Cartmel Aynsome Rd near Town End	961	4	S	At or near Fellfoot
962				962				962				962	4	S	At or near Fellfoot
963				963				963	3	AL	Cartmel Pit Farm	963	4	S	Between Fellfoot & Townhead
964				964				964	3	AL	Between Cartmel & Hampsfield Fell	964	4	S	Between Fellfoot & Townhead
965				965				965	3	AL	At or near Cartmel Pit Farm	965	4	S	Between Fellfoot & Townhead
966				966				966	3	AL	Between Cartmel Churchtown & Hampsfield Fell	966	4	S	Between Fellfoot & Townhead
967	2	S	At or near North of High Cark	967	2	S	At or near North of High Cark	967	3	AL	At or near Cartmel Pit Farm	967	4	S	Between Fellfoot & Townhead
968	2	S	At or near North of High Cark	968	2	S	At or near North of High Cark	968	3	AL	At or near Cartmel Pit Farm	968	4	S	At or near Townhead, Staveley
969				969				969	3	AL	Between Cartmel & Hampsfield Fell	969	4	S	At or near Townhead, Staveley
970	2	S	At or near North of High Cark	970	2	S	At or near North of High Cark	970	3	AL	Between Cartmel & Hampsfield Fell	970	4	S	At or near Townhead, Staveley
971				971				971	3	AL	Between Cartmel & Hampsfield Fell	971	4	S	At or near Townhead, Staveley
972	2	S	At or near North of High Cark	972	2	S	At or near North of High Cark	972	3	AL	Between Cartmel & Hampsfield Fell	972	4	S	At or near Townhead, Staveley
973				973				973	3	AL	Between Cartmel & Hampsfield Fell	973	4	S	At or near Townhead, Staveley
974	2	S	At or near North of High Cark	974	2	S	At or near North of High Cark	974	3	AL	Adjoining Haggs Lane near High Fell Gate	974	4	S	At or near Townhead, Staveley
975	2	S	At or near North of High Cark	975	2	S	At or near North of High Cark	975	3	BE	Near High Farm	975	4	S	At or near Townhead, Staveley
976	2	S	Between High Cark & Seatle	976	2	S	Between High Cark & Seatle	976	3	BE	Near High Farm	976	4	S	At or near Townhead, Staveley
977				977				977	3	BE	Near High Farm	977	4	S	At or near Townhead, Staveley
978				978				978	3	BE	Near High Farm	978	4	S	At or near Townhead, Staveley
979				979				979				979	4	S	At or near Townhead, Staveley
980	2	S	Between High Cark & Seatle	980	2	S	Between High Cark & Seatle	980				980	4	S	At or near Townhead, Staveley
981				981				981				981	4	S	At or near Townhead, Staveley
982	2	S	Between High Cark & Seatle	982	2	S	Between High Cark & Seatle	982				982	4	S	At or near Townhead, Staveley
983				983				983	3	BE	Near High Farm	983	4	S	At or near Townhead, Staveley
984	2	S	Between High Cark & Seatle	984	2	S	Between High Cark & Seatle	984	3	BE	Near High Farm	984	4	S	At or near Townhead, Staveley
985				985				985	3	BE	Near High Farm	985	4	S	At or near Townhead, Staveley
986				986				986	3	BE	Near High Farm	986	4	S	At or near Townhead, Staveley
987				987				987	3	BE	Near High Farm	987	4	S	Staveley North of Townhead
988	2	S	Between High Cark & Seatle	988	2	S	Between High Cark & Seatle	988	3	BE	Near High Farm	988	4	S	Staveley North of Townhead
989	2	S	Between High Cark & Seatle	989	2	S	Between High Cark & Seatle	989				989	4	S	Staveley North of Townhead
990				990				990	3	BE	Near High Farm	990	4	S	Staveley North of Townhead
991	2	S	Between High Cark & Seatle	991	2	S	Between High Cark & Seatle	991	3	BE	Near High Farm	991	4	S	Staveley North of Townhead
992	2	S	Between High Cark & Seatle	992	2	S	Between High Cark & Seatle	992	3	BE	Near High Farm	992	4	S	Staveley North of Townhead
993	2	S	Between High Cark & Seatle	993	2	S	Between High Cark & Seatle	993	3	BE	Near High Farm	993	4	S	Staveley North of Townhead
994	2	S	At or near Seatle	994	2	S	At or near Seatle	994	3	BE	Near High Farm	994	4	S	Staveley North of Townhead
995	2	S	At or near Seatle	995	2	S	At or near Seatle	995	3	BE	South of Hampsfield Rd. from Grange	995	4	S	Staveley North of Townhead
996	2	S	At or near Seatle	996	2	S	At or near Seatle	996	3	BE	South of Hampsfield Rd. from Grange	996	4	S	Staveley North of Townhead
997	2	S	At or near Seatle	997	2	S	At or near Seatle	997	3	BE	South of Hampsfield Rd. from Grange	997	4	S	Staveley North of Townhead
998	2	S	At or near Seatle	998	2	S	At or near Seatle	998	3	BE	South of Hampsfield Rd. from Grange	998	4	S	Staveley North of Townhead
999	2	S	At or near Seatle	999	2	S	At or near Seatle	999	3	BE	South of Hampsfield Rd. from Grange	999	4	S	Staveley North of Townhead
1000	2	S	At or near Seatle	1000	2	S	At or near Seatle	1000				###	4	S	Staveley North of Townhead



Approximate Property Locations on Enclosure Survey Map Ref WPR 89/3/2/23

Area 1				Area 2				Area 3				Area 4			
Field #	Area	Township	Approximate location	Field #	Area	Township	Approximate location	Field #	Area	Township	Approximate location	Field #	Area	Township	Approximate location
				1001	2	S	At or near Seattle	1001	3	BE	South of Hamsfield Rd. from Grange	###	4	S	Staveley North of Townhead
				1002	2	S	At or near Seattle	1002	3	BE	North Grange	###	4	S	Staveley North of Townhead
				1003	2	S	At or near Seattle	1003				###	4	S	Staveley North of Townhead
				1004				1004				###	4	S	Staveley North of Townhead
				1005				1005				###	4	S	Staveley North of Townhead
				1006				1006				###	4	S	Staveley North of Townhead
				1007				1007				###	4	S	Staveley North of Townhead
				1008				1008	3	BE	North Grange	###	4	S	Staveley North of Townhead
				1009				1009	3	BE	North Grange	###	4	S	Staveley North of Townhead
				1010	2	S	At or near Seattle	1010	3	BE	North Grange	###	4	S	Staveley North of Townhead
				1011	2	S	At or near Seattle	1011				###	4	S	Staveley North of Townhead
				1012	2	S	At or near Seattle	1012	3	BE	North East Grange	###	4	S	Staveley North of Townhead
				1013				1013				###	4	S	Staveley North of Townhead
				1014	2	S	At or near Seattle	1014	3	BE	North East Grange	###	4	S	Staveley North of Townhead
				1015	2	S	At or near Seattle	1015	3	BE	North East Grange	###	4	S	Staveley North of Townhead
				1016	2	S	At or near Seattle	1016				###	4	S	Staveley North of Townhead
				1017	2	S	At or near Seattle	1017	3	BE	North East Grange	###	4	S	Staveley North of Townhead
				1018	2	S	At or near Seattle	1018				###			
				1019	2	S	At or near Seattle	1019				###			
				1020	2	S	At or near Seattle	1020				###			
				1021	2	S	At or near Seattle	1021	3	BE	North East Grange	###			
				1022	2	S	At or near Seattle	1022				###			
				1023	2	S	West of Seattle	1023	3	BE	North East Grange	###			
				1024	2	S	West of Seattle	1024	3	BE	North East Grange	###			
				1025	2	S	West of Seattle	1025				###			
				1026	2	S	Between Seatle & Hazelridge	1026	3	BE	At of near Slack	###			
				1027	2	S	Between Seatle & Hazelridge	1027				###			
				1028	2	S	Between Seatle & Hazelridge	1028	3	BE	At of near Slack	###			
				1029	2	S	Between Seatle & Hazelridge	1029	3	BE	At of near Slack	###			
				1030	2	S	Between Seatle & Hazelridge	1030				###			
				1031	2	S	North of Seattle	1031	3	BE	At of near Slack	###			
				1032	2	S	North of Seattle	1032				###			
				1033	2	S	North of Seattle	1033	3	BE	At of near Slack	###			
				1034	2	S	North of Seattle	1034				###			
				1035	2	S	At or near North Seatle	1035	3	BE	At of near Slack	###			
				1036	2	S	At or near North Seatle	1036				###			
				1037	2	S	At or near North Seatle	1037	3	BE	At of near Slack	###			
				1038	2	S	At or near North Seatle	1038	3	AU	South of Castle Head	###			
				1039	2	S	At or near North Seatle	1039				###			
				1040	2	S	At or near North Seatle	1040	3	AU	At or near Castle Head	###			
				1041	2	S	At or near North Seatle	1041	3	AU	At Castle Head	###			
				1042	2	S	Between Seatle & Hazelridge	1042				###			
				1043	2	S	Between Seatle & Hazelridge	1043	3	AU	At or near Castle Head	###			
				1044	2	S	Between Seatle & Hazelridge	1044	3	AU	At or near Castle Head	###			
				1045	2	S	Between Seatle & Hazelridge	1045	3	AU	North of Castle Head	###			
				1046	2	S	Between Seatle & Hazelridge	1046	3	AU	Between Castle Head & Lindale	###			
				1047	2	S	Between Seatle & Hazelridge	1047	3	AU	Between Castle Head & Lindale	###			
				1048	2	S	Between Seatle & Hazelridge	1048				###			
				1049	2	S	Between Seatle & Hazelridge	1049	3	AU	North of Castle Head	###			
				1050	2	S	Between Seatle & Hazelridge	1050	3	AU	Near Lindale to the West	###			

Approximate Property Locations on Enclosure Survey Map Ref WPR 89/3/2/23

Area 1				Area 2				Area 3				Area 4			
Field #	Area	Township	Approximate location	Field #	Area	Township	Approximate location	Field #	Area	Township	Approximate location	Field #	Area	Township	Approximate location
				1051	2	S	Between Seatle & Hazelridge	1051	3	AU	Between Castle Head & Lindale	###			
				1052	2	S	Between Seatle & Hazelridge	1052	3	AU	Between Castle Head & Lindale	###			
				1053	2	S	Between Seatle & Hazelridge	1053	3	AU	Near Lindale to the West	###			
				1054	2	S	Between Seatle & Hazelridge	1054	3	AU	Between Castle Head & Lindale	###			
				1055	2	S	Between Seatle & Hazelridge	1055	3	AU	Between Castle Head & Lindale	###			
				1056	2	S	Between Seatle & Hazelridge	1056	3	AU	Between Castle Head & Lindale	###			
				1057	2	S	Between Seatle & Hazelridge	1057	3	AU	Near Lindale to the West	###			
				1058	2	S	Between Seatle & Hazelridge	1058	3	AU	Between Castle Head & Lindale	###			
				1059	2	S	Between Seatle & Hazelridge	1059	3	AU	Near Lindale to the West	###			
				1060	2	S	Between Seatle & Hazelridge	1060	3	AU	Between Castle Head & Lindale	###			
				1061	2	S	Between Seatle & Hazelridge	1061	3	AU	Near Lindale to the West	###			
				1062	2	S	Between Seatle & Hazelridge	1062	3	AU	Between Castle Head & Lindale	###			
				1063	2	S	Between Seatle & Hazelridge	1063	3	AU	Near Lindale to the West	###			
				1064	2	S	Between Seatle & Hazelridge	1064	3	AU	Between Castle Head & Lindale	###			
				1065	2	S	Between Seatle & Hazelridge	1065	3	AU	At or near Lindale	###			
				1066	2	S	Between Seatle & Hazelridge	1066	3	AU	At or near Lindale	###			
				1067	2	S	Between Seatle & Hazelridge	1067	3	AU	At or near Lindale	###			
				1068	2	S	Between Seatle & Hazelridge	1068	3	AU	At or near Lindale	###			
				1069	2	S	Between Seatle & Hazelridge	1069	3	AU	At or near Lindale	###			
				1070	2	S	Between Seatle & Hazelridge	1070	3	AU	At or near Lindale	###			
				1071	2	S	Between Seatle & Hazelridge	1071	3	AU	At or near Lindale	###			
				1072	2	S	Between Seatle & Hazelridge	1072	3	AU	At or near Lindale	###			
				1073	2	S	Between Seatle & Hazelridge	1073	3	AU	At or near Lindale	###			
				1074	2	S	Between Seatle & Hazelridge	1074	3	AU	At or near Lindale	###			
				1075	2	S	Between Seatle & Hazelridge	1075	3	AU	At or near Lindale	###			
				1076	2	S	Between Seatle & Hazelridge	1076	3	AU	At or near Lindale	###			
				1077	2	S	Between Seatle & Hazelridge	1077	3	AU	At or near Lindale	###			
				1078	2	S	Between Seatle & Hazelridge	1078	3	AU	At or near Lindale	###			
				1079	2	S	Between Seatle & Hazelridge	1079	3	AU	At or near Lindale	###			
				1080	2	S	Between Seatle & Hazelridge	1080	3	AU	At or near Lindale	###			
				1081	2	S	Between Seatle & Hazelridge	1081	3	AU	At or near Lindale	###			
				1082	2	S	Between Seatle & Hazelridge	1082	3	AU	At or near Lindale	###			
				1083	2	S	Between Seatle & Hazelridge	1083	3	AU	At or near Lindale	###			
				1084	2	S	Between Seatle & Hazelridge	1084	3	AU	At or near Lindale	###			
				1085	2	S	Between Seatle & Hazelridge	1085	3	AU	At or near Lindale	###			
				1086	2	S	Between Seatle & Hazelridge	1086	3	AU	At or near Lindale	###			
				1087	2	S	Between Seatle & Hazelridge	1087	3	AU	At or near Lindale	###			
				1088	2	S	Between Seatle & Hazelridge	1088	3	AU	At or near Lindale	###			
				1089	2	S	Between Seatle & Hazelridge	1089	3	AU	At or near Lindale	###			
				1090	2	S	Between Seatle & Hazelridge	1090	3	AU	At or near Lindale	###			
				1091	2	S	Between Seatle & Hazelridge	1091	3	AU	At or near Lindale	###			
				1092	2	S	Between Seatle & Hazelridge	1092	3	AU	At or near Lindale	###			
				1093	2	S	Between Seatle & Hazelridge	1093	3	AU	At or near Lindale (noted only as 93 on map 07 3)	###			
				1094	2	S	Between Seatle & Hazelridge	1094	3	AU	At or near Lindale	###			
				1095	2	S	Between Seatle & Hazelridge	1095	3	AU	At or near Lindale (noted only as 95 on map 07 3)	###			
				1096	2	S	Between Seatle & Hazelridge	1096	3	AU	At or near Lindale (noted only as 96 on map 07 3)	###			
				1097	2	S	Between Seatle & Hazelridge	1097	3	AU	At or near Lindale (noted only as 97 on map 07 3)	###			
				1098	2	S	South of Hazelridge	1098	3	AU	At or near Lindale (noted only as 98 on map 07 3)	###			
				1099				1099	3	AU	At or near Lindale	###			
				1100	2	S	South of Hazelridge	1100	3	AU	At or near Lindale	###			

Approximate Property Locations on Enclosure Survey Map Ref WPR 89/3/2/23

Area 1				Area 2				Area 3				Area 4			
Field #	Area	Township	Approximate location	Field #	Area	Township	Approximate location	Field #	Area	Township	Approximate location	Field #	Area	Township	Approximate location
				1101	2	S	South of Hazelridge	1101	3	AU	At or near Lindale	###			
				1102	2	S	South of Hazelridge	1102	3	AU	At or near Lindale	###			
				1103	2	S	South of Hazelridge	1103	3	AU	At or near Lindale	###			
				1104	2	S	South of Hazelridge	1104	3	AU	At or near Lindale	###			
				1105	2	S	South of Hazelridge	1105	3	AU	At or near Lindale	###			
				1106	2	S	South of Hazelridge	1106	3	AU	At or near Lindale	###			
				1107	2	S	South of Hazelridge	1107	3	AU	At or near Lindale	###			
				1108	2	S	South of Hazelridge	1108	3	AU	At or near Lindale	###			
				1109	2	S	South of Hazelridge	1109	3	AU	At or near Lindale	###			
				1110	2	S	South of Hazelridge	1110	3	AU	At or near Lindale	###			
				1111	2	S	South of Hazelridge	1111	3	AU	At or near Lindale	###			
				1112	2	S	South of Hazelridge	1112	3	AU	At or near Lindale	###			
				1113	2	S	South of Hazelridge	1113	3	AU	At or near Lindale (noted only as 13 on map 07 3)	###			
				1114	2	S	South of Hazelridge	1114	3	AU	At or near Lindale	###			
				1115	2	S	South of Hazelridge	1115	3	AU	At or near Lindale	###			
				1116	2	S	South of Hazelridge	1116	3	AU	At or near Lindale (noted only as 16 on map 07 3)	###			
				1117	2	S	At or near Hazelridge	1117	3	AU	At or near Lindale (noted only as 17 on map 07 3)	###			
				1118				1118	3	AU	At or near Lindale	###			
				1119	2	S	At or near Hazelridge	1119	3	AU	At or near Lindale (noted only as 19 on map 07 3)	###			
				1120	2	S	At or near Hazelridge	1120	3	AU	At or near Lindale	###			
				1121	2	S	At or near Hazelridge	1121	3	AU	At or near Lindale	###	4	S	At or near Ayside North
				1122	2	S	At or near Hazelridge	1122	3	AU	At or near Lindale	###	4	S	At or near Ayside North
				1123	2	S	Between Hazelridge & Fair Ridge	1123	3	AU	At or near Lindale	###	4	S	At or near Ayside North
				1124	2	S	Between Hazelridge & Fair Ridge	1124	3	AU	South West or West of Lindale	###	4	S	At or near Ayside North
				1125	2	S	Between Hazelridge & Fair Ridge	1125	3	AU	South West or West of Lindale	###	4	S	At or near Ayside North
				1126	2	S	Between Hazelridge & Fair Ridge	1126	3	AU	South West or West of Lindale	###	4	S	At or near Ayside North
				1127	2	S	Between Hazelridge & Fair Ridge	1127	3	AU	South West or West of Lindale	###	4	S	At or near Ayside North
				1128	2	S	Between Hazelridge & Fair Ridge	1128	3	AU	South West or West of Lindale	###	4	S	At or near Ayside North
				1129	2	S	Between Hazelridge & Fair Ridge	1129	3	AU	South West or West of Lindale	###	4	S	At or near Ayside North
				1130	2	S	South of Fair Ridge	1130	3	AU	Between Blawith Gate & Lindale	###			
				1131	2	S	At or near Fair Ridge	1131	3	AU	Between Blawith Gate & Lindale	###			
				1132	2	S	At or near Fair Ridge	1132	3	AU	Between Blawith Gate & Lindale	###			
				1133	2	S	At or near Fair Ridge	1133	3	AU	Between Blawith Gate & Lindale	###			
				1134	2	S	At or near Fair Ridge	1134	3	AU	Between Blawith Gate & Lindale	###			
				1135	2	S	At or near Fair Ridge	1135	3	AU	Between Blawith Gate & Lindale	###			
				1136	2	S	At or near Fair Ridge	1136	3	AU	Between Blawith Gate & Lindale	###			
				1137	2	S	Across road from Fidler Hall	1137	3	AU	Between Blawith Gate & Lindale	###			
				1138	2	S	Across road from Fidler Hall	1138	3	AU	Between Blawith Gate & Lindale	###			
				1139	2	S	Across road from Fidler Hall	1139	3	AU	Between Blawith Gate & Lindale	###			
				1140	2	S	Across road from Fidler Hall	1140	3	AU	Between Castle Head & Wilson House	###			
				1141	2	S	At or near Fair Ridge	1141				###			
				1142	2	S	At or near Fair Ridge	1142	3	AU	At or near Wilson House	###			
				1143	2	S	At or near Fair Ridge	1143				###			
				1144	2	S	At or near Fair Ridge	1144	3	AU	At or near Wilson House	###			
				1145	2	S	At or near Fair Ridge	1145	3	AU	At or near Wilson House	###			
				1146	2	S	At or near Fair Ridge	1146	3	AU	At or near Wilson House	###			
				1147				1147	3	AU	At or near Wilson House	###			
				1148	2	S	North of Fair Ridge	1148	3	AU	At or near Wilson House	###			
				1149	2	S	North of Fair Ridge	1149	3	AU	At or near Wilson House	###			
				1150	2	S	North of Fair Ridge	1150	3	AU	At or near Wilson House	###			

Approximate Property Locations on Enclosure Survey Map Ref WPR 89/3/2/23

Area 1				Area 2				Area 3				Area 4			
Field #	Area	Township	Approximate location	Field #	Area	Township	Approximate location	Field #	Area	Township	Approximate location	Field #	Area	Township	Approximate location
				1151				1151	3	AU	At or near Wilson House				
				1152	2	S	North of Fair Ridge	1152	3	AU	At or near Wilson House				
				1153	2	S	North of Fair Ridge	1153	3	AU	At or near Wilson House				
				1154				1154	3	AU	At or near Wilson House				
				1155	2	S	North of Fair Ridge	1155	3	AU	At or near Wilson House				
				1156	2	S	North of Fair Ridge	1156	3	AU	At or near Wilson House				
				1157	2	S	North of Fair Ridge	1157	3	AU	At or near Wilson House				
				1158	2	S	North of Fair Ridge	1157	3	AU	North of Wilson House				
				1159	2	S	At or near Fair Ridge	1158							
				1160	2	S	Between Hazelridge & Fair Ridge	1159	3	BE	North Grange				
				1161	2	S	Between Hazelridge & Fair Ridge	1160	3	BE	North Grange				
				1162	2	S	Between Hazelridge & Fair Ridge	1161	3	BE	Probably in Grange				
				1163	2	S	Between Hazelridge & Fair Ridge	1162	3	BE	Probably in Grange				
				1164	2	S	Between Hazelridge & Fair Ridge	1163	3	BE	Probably in Grange				
				1165	2	S	West of Fair Ridge	1164	3	BE	North Grange				
				1166	2	S	Between Staveley & Fair Ridge	1165	3	BE	Probably in Grange				
				1167	2	S	Between Staveley & Fair Ridge	1166	3	BE	North Grange				
				1168	2	S	Between Staveley & Fair Ridge	1167	3	BE	Probably in Grange				
				1169	2	S	Between Staveley & Fair Ridge	1168	3	BE	Probably in Grange				
				1170	2	S	Between Staveley & Fair Ridge	1169	3	BE	Probably in Grange				
				1171	2	S	Between Staveley & Fair Ridge	1170	3	BE	Probably in Grange				
				1172	2	S	Between Staveley & Fair Ridge	1171	3	BE	Probably in Grange				
				1173	2	S	Between Staveley & Fair Ridge	1172	3	BE	Probably in Grange				
				1174	2	S	Between Staveley & Fair Ridge	1173	3	BE	Probably in Grange				
				1175	2	S	Between Staveley & Fair Ridge	1174	3	BE	Probably in Grange				
				1176				1175							
				1177				1176	3	BE	Probably in Grange				
				1178				1177	3	BE	Probably in Grange				
				1179	2	S	At or near Canny Hill	1178	3	BE	Probably in Grange				
				1180				1179	3	BE	Probably in Grange				
				1181	2	S	At or near Canny Hill	1180	3	BE	Probably in Grange				
				1182	2	S	At or near Canny Hill	1181	3	BE	North Grange				
				1183	2	S	At or near Canny Hill	1182	3	BE	North Grange				
				1184				1183	3	BE	North Grange				
				1185	2	S	At or near Canny Hill	1184	3	BE	North Grange				
				1186	2	S	At or near Canny Hill	1185	3	BE	Probably in Grange				
				1187				1186	3	BE	Probably in Grange				
				1188				1187	3	BE	Probably in Grange				
				1189	2	S	At or near Canny Hill	1188	3	BE	Probably in Grange				
				1190	2	S	Near Newby Bridge	1189	3	BE	Probably in Grange				
				1191	2	S	Near Newby Bridge	1190	3	BE	Probably in Grange				
				1192				1191	3	BE	Probably in Grange				
				1193				1192	3	BE	Probably in Grange				
				1194	2	S	Near Newby Bridge	1193	3	BE	South Grange				
				1195	2	S	Near Newby Bridge	1194	3	BE	South Grange				
				1196	2	S	Near Newby Bridge	1195	3	BE	Grange North of road to Cartmel				
				1197				1196	3	BE	South Grange				
				1198	2	S	Near Newby Bridge	1197	3	BE	South Grange				
				1199				1198	3	BE	Grange North of road to Cartmel				
				1200				1199	3	BE	Grange North of road to Cartmel				
								1200	3	BE	Grange North of road to Cartmel				

Approximate Property Locations on Enclosure Survey Map Ref WPR 89/3/2/23

Area 1				Area 2				Area 3				Area 4			
Field #	Area	Township	Approximate location	Field #	Area	Township	Approximate location	Field #	Area	Township	Approximate location	Field #	Area	Township	Approximate location
				1201				1201							
				1202	2	S	Near Newby Bridge	1202	3	BE	Grange North of road to Cartmel				
				1203	2	S	Near Newby Bridge	1203	3	BE	Grange North of road to Cartmel				
				1204	2	S	Near Newby Bridge	1204	3	BE	Grange North of road to Cartmel				
				1205	2	S	Near Newby Bridge	1205	3	BE	Grange North of road to Cartmel				
				1206	2	S	Near Newby Bridge	1206							
				1207	2	S	Near Newby Bridge	1207	3	BE	Grange North of road to Cartmel				
				1208	2	S	Near Newby Bridge	1208	3	BE	Grange North of road to Cartmel				
				1209	2	S	Near Newby Bridge	1209	3	BE	Grange North of road to Cartmel				
				1210	2	HU	At or near Backbarrow	1210							
				1211				1211							
				1212				1212	3	BE	South Grange				
				1213				1213							
				1214				1214							
				1215				1215							
				1216	2	HU	At or near Backbarrow	1216							
				1217				1217							
				1218	2	HU	At or near Backbarrow	1218							
				1219	2	HU	At or near Backbarrow	1219	3	BE	South Grange				
				1220	2	HU	At or near Backbarrow	1220	3	BE	South Grange				
				1221				1221							
				1222	2	HU	Between Backbarrow & Brow Edge	1222							
				1223	2	HU	Between Backbarrow & Brow Edge	1223	3	BE	South Grange				
				1224				1224							
				1225				1225							
				1226	2	HU	West of Brow Edge	1226	3	BE	South Grange				
				1227	2	HU	West of Brow Edge	1227	3	BE	South Grange				
				1228	2	HU	West of Brow Edge	1228	3	BE	South Grange				
				1229				1229	3	BE	South Grange				
				1230				1230	3	BE	South Grange				
				1231	2	HU	West of Brow Edge	1231	3	BE	South Grange				
				1232	2	HU	West of Brow Edge	1232							
				1233	2	HU	West of Brow Edge	1233	3	BE	South Grange				
				1234	2	HU	West of Brow Edge	1234	3	BE	South Grange				
				1235	2	HU	West of Brow Edge	1235	3	BE	South Grange				
				1236				1236	3	BE	South Grange				
				1237				1237	3	BE	South Grange				
				1238	2	HU	Between Backbarrow & Brow Edge	1238							
				1239	2	HU	Between Backbarrow & Brow Edge	1239							
				1240	2	HU	Between Backbarrow & Brow Edge	1240							
				1241	2	HU	Between Backbarrow & Brow Edge	1241							
				1242	2	HU	Between Backbarrow & Brow Edge	1242							
				1243	2	HU	Between Backbarrow & Brow Edge	1243							
				1244	2	HU	Between Backbarrow & Brow Edge	1244							
				1245	2	HU	Between Lowwood & Brow Edge	1245							
				1246				1246							
				1247	2	HU	Between Lowwood & Brow Edge	1247							
				1248	2	HU	Between Lowwood & Brow Edge	1248							
				1249	2	HU	Between Lowwood & Brow Edge	1249							
				1250	2	HU	Between Lowwood & Brow Edge	1250							

Approximate Property Locations on Enclosure Survey Map Ref WPR 89/3/2/23

Area 1				Area 2				Area 3				Area 4			
Field #	Area	Township	Approximate location	Field #	Area	Township	Approximate location	Field #	Area	Township	Approximate location	Field #	Area	Township	Approximate location
				1251				1251							
				1252	2	HU	At or near Lowwood	1252							
				1253	2	HU	At or near Lowwood	1253							
				1254	2	HU		1254							
				1255	2	HU		1255							
				1256	2	HU		1256	3	BE	Between Low Fell Gate & Berner Close				
				1257	2	HU	At or near Lowwood	1257	3	BE	Between Low Fell Gate & Berner Close				
				1258	2	HU	At or near Lowwood	1258	3	BE	Between Low Fell Gate & Berner Close				
				1259	2	HU	At or near Lowwood	1259	3	BE	Between Low Fell Gate & Berner Close				
				1260	2	HU	At or near Lowwood	1260	3	BE	Between Low Fell Gate & Berner Close				
				1261	2	HU		1261	3	BE	Between Low Fell Gate & Berner Close				
				1262	2	HU	At or near Lowwood	1262	3	BE	Between Low Fell Gate & Berner Close				
				1263	2	HU		1263	3	BE	Between Low Fell Gate & Berner Close				
				1264	2	HU	At or near Lowwood	1264	3	BE	Between Low Fell Gate & Berner Close				
				1265	2	HU	Sourh West of Lowwood	1265	3	BE	Between Low Fell Gate & Berner Close				
				1266	2	HU	Sourh West of Lowwood	1266	3	BE	Between Low Fell Gate & Berner Close				
				1267	2	HU	Sourh West of Lowwood	1267	3	BE	Between Low Fell Gate & Berner Close				
				1268	2	HU	Sourh West of Lowwood	1268	3	BE	Between Low Fell Gate & Berner Close				
				1269	2	HU		1269	3	BE	Between Low Fell Gate & Berner Close				
				1270	2	HU	Sourh West of Lowwood	1270	3	BE	Between Low Fell Gate & Berner Close				
				1271	2	HU	Sourh West of Lowwood	1271	3	BE	Between Low Fell Gate & Berner Close				
				1272	2	HU	Sourh West of Lowwood	1272	3	BE	Between Low Fell Gate & Berner Close				
				1273	2	HU	Sourh West of Lowwood	1273	3	BE	Between Low Fell Gate & Berner Close				
				1274	2	HU	Sourh West of Lowwood	1274	3	BE	Between Low Fell Gate & Berner Close				
				1275	2	HU	Sourh West of Lowwood	1275	3	BE	Between Low Fell Gate & Berner Close				
				1276	2	HU	Sourh West of Lowwood	1276	3	BE	Between Low Fell Gate & Berner Close				
				1277	2	HU	Sourh West of Lowwood	1277	3	BE	Between Low Fell Gate & Berner Close				
				1278	2	HU	Sourh West of Lowwood	1278	3	BE	Between Low Fell Gate & Berner Close				
				1279				1279	3	BE	Between Low Fell Gate & Berner Close				
				1280				1280	3	BE	Between Low Fell Gate & Berner Close				
				1281				1281	3	BE	Between Low Fell Gate & Berner Close				
				1282	2	HU	Between Stribers & Mungeon	1282	3	BE	Between Low Fell Gate & Berner Close				
				1283	2	HU	Between Stribers & Mungeon	1283	3	BE	Between Low Fell Gate & Berner Close				
				1284	2	HU	Between Stribers & Mungeon	1284	3	BE	Between Low Fell Gate & Berner Close				
				1285	2	HU	Between Stribers & Mungeon	1285	3	BE	Between Low Fell Gate & Berner Close				
				1286	2	HU	Between Stribers & Mungeon	1286	3	BE	Between Low Fell Gate & Berner Close				
				1287	2	HU	Near Stribers House	1287	3	BE	Between Low Fell Gate & Berner Close				
				1288	2	HU	Near Stribers House	1288	3	BE	Between Low Fell Gate & Berner Close				
				1289	2	HU	Near Stribers House	1289	3	BE	Between Low Fell Gate & Berner Close				
				1290	2	HU	Near Stribers House	1290	3	BE	Between Low Fell Gate & Berner Close				
				1291	2	HU	Between Stribers & Mungeon	1291	3	BE	Between Low Fell Gate & Berner Close				
				1292	2	HU	Between Stribers & Mungeon	1292	3	BE	Between Low Fell Gate & Berner Close				
				1293	2	HU	Between Stribers & Mungeon	1293	3	BE	Between Low Fell Gate & Berner Close				
				1294	2	HU	Between Stribers & Mungeon	1294	3	BE	Between Low Fell Gate & Berner Close				
				1295	2	HU	At or near Grassgarth	1295	3	BE	Between Low Fell Gate & Berner Close				
				1296	2	HU	At or near Grassgarth	1296	3	BE	Between Low Fell Gate & Berner Close				
				1297	2	HU	At or near Grassgarth	1297	3	BE	Between Low Fell Gate & Berner Close				
				1298	2	HU	At or near Grassgarth	1298	3	BE	Between Low Fell Gate & Berner Close				
				1299	2	HU	Between Stribers & Mungeon	1299	3	BE	Between Low Fell Gate & Berner Close				
				1300	2	HU	Between Stribers & Mungeon	1300	3	BE	Between Low Fell Gate & Berner Close				







Approximate Property Locations on Enclosure Survey Map Ref WPR 89/3/2/23

Field #  
Area  
Township  
Area 1  
Approximate location

Field #  
Area  
Township  
Area 2  
Approximate location

1401	2	HU	At or near Greenhurst
1402	2	HU	At or near Greenhurst
1403	2	HU	At or near Greenhurst
1404	2	HU	At or near Greenhurst
1405	2	HU	At or near Greenhurst
1406	2	HU	At or near Greenhurst
1407	2	HU	At or near Greenhurst

Field #  
Area  
Township  
Area 3  
Approximate location

Field #  
Area  
Township  
Area 4  
Approximate location